

FEDERATION ( B.C. REGION SINCE 1941) OF

**CANADIAN  
ARTISTS'**

OCTOBER 1997

**News**

*Annual*

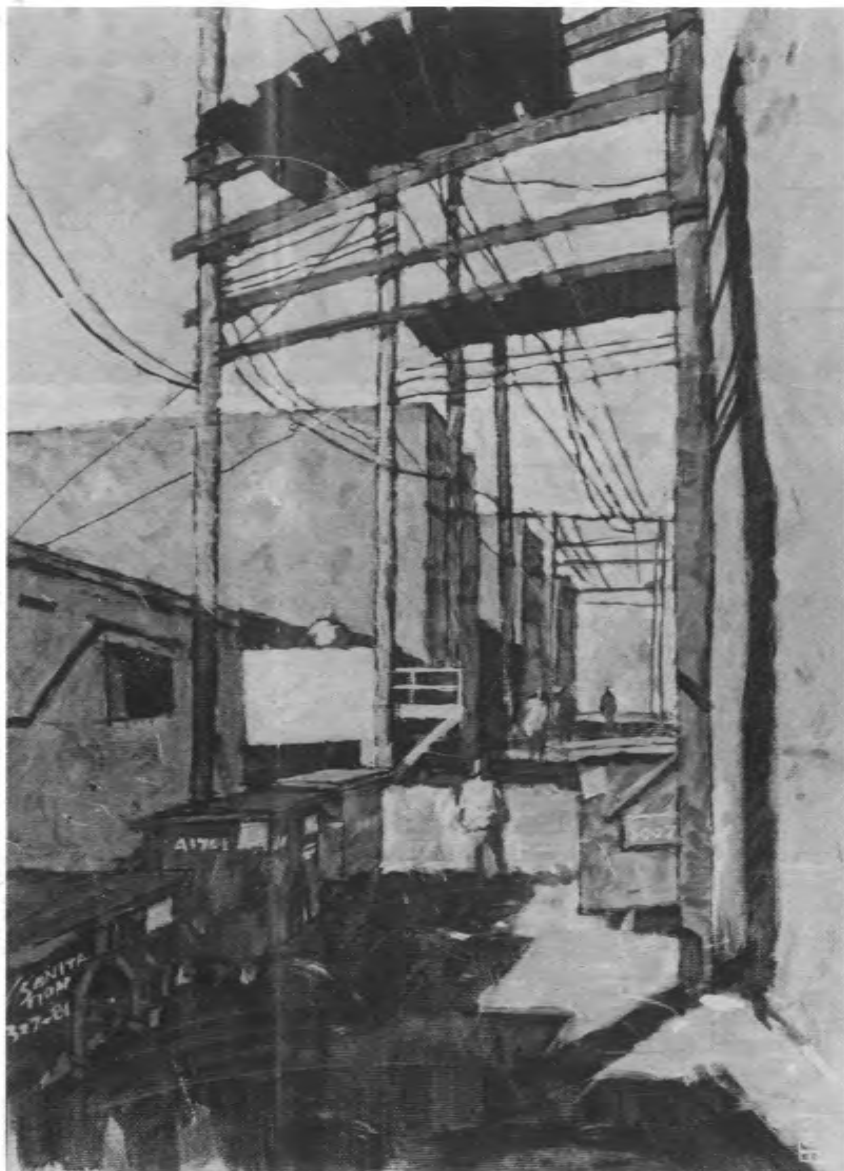
**FALL**

*Juried  
Exhibition*

ALL MEDIA

*Open to all  
members*

*September 2  
to September 14*



FIRST PRIZE: CHANGING SCENES AUTUMN LIGHT, PENDER ST. ALLEY acrylic, 12"x16" Han Jiang



**SECOND PRIZE**  
**WINDOW BOXES**  
acrylic, 20"x30"  
*Patricia Peacock, AF*



**THIRD PRIZE**  
**SUMMER HOLIDAY**  
watercolour, 20"x27"  
*Henry Tsao*

Federation (B.C. Region - Since 1941) of  
**Canadian Artists' News**

OCTOBER 1997

**Canadian Artists' News**  
 is published 10 times per year.

**Federation Gallery (and Mailing Address):**  
 1241 Cartwright St. (Granville Island), Vancouver, BC V6H 4B7  
 Gallery Phone: 681-8534 Office Phone: 681-2744  
 Fax: 681-2740 Email: fca@istar.ca  
 Gallery (Winter Hours) Daily except Mondays - 10 am to 4 pm  
 Annual subscription rate is included in Membership Fee.

**News, articles, announcements and good contrast black/white or colour photos welcome. (NO slides please.) Please Note: DEADLINE for submissions to next issue (November) is October 1, 1997.**

**Publisher:** Federation of Canadian Artists, B.C. Region  
**Editor:** Steven Laszcz (582-2115)  
**Email:** lashart@istar.ca  
**Advertising:** Ralph Roper (224-7974)  
**Cover Photography:** Sid Dyke, AFCA (853-3400)  
**Layout/Prepress/Printing:** Gastown Printers Ltd.  
**Proofreading:** Tony Greenall

**FCA Elected Executive 1997/98:**

**President:** Alessandra Bitelli, SFCA, CSPWC (926-8921)  
**1st V.P.:** Janice Robertson, SFCA (888-2230)  
**2nd V.P.:** Bob McMurray, AFCA (r 535-5069; o 576-9121)  
**Treasurer:** Mary Ellen Klassen (294-2575)  
**Rec. Secretary:** Josanne van Hees, AFCA (538-3346)  
**Past President:** Mike Svob, SFCA (535-1459)

**Appointments to the Board 1997/98:**

**Member-at-Large:** Sue McIvor, AFCA (r 538-5577)  
**Fundraising:** Marjorie Young (324-9222)  
**Nominations:** Marjorie Turnbull, AFCA (941-7695)  
**Publicity:** Rita Monaco, AFCA (876-2005)  
**Standards:** Vacant

**Staff:**

**Gallery Manager:** Nancy Clayton  
**Business Administrator:** Susan Foster

**Professional Services:**

**Weekend Gallery Supervisor:** Ellen Poole  
**Bookkeeper:** Natalie Turner  
**Auditors:** Clifton N. Chu, Chartered Accountant  
**Solicitors:** Michael D. Sawyer, Richards, Buell, Sutton

**Advertisers in the Canadian Artists' News support and assist the Federation with their Ads. Members can help by buying their supplies from these good people. PLEASE SUPPORT OUR ADVERTISERS!**

**Painters in Action**  
**MONDAYS**

\* \* \* \* \*

**Demonstrations at Federation Gallery**  
 1241 Cartwright Street, Vancouver

**Admission: Free to FCA Members**  
**\$10.00 to Non-Members**

Date	Artist / Subject
Oct. 6 1-4 pm	Robert Genn, SFCA <i>Studio Demo</i> <i>Call gallery to reserve your spot</i>
Nov. 10 1-4 pm	George McLaughlin, SFCA <i>Gouache</i>

\* \* \* \* \*

*"Gouache (pronounced g.wash) is a water-based medium which has many of the attributes of watercolour although it is less transparent and more opaque. It can be applied in thin washes as with watercolour or applied as thickly as acrylics or oils. Gouache also works well when painting from dark to light."*

- Kenneth A. Ferris  
*Art Impressions, Spring 1995*



Robert H. McMurray, C.A.

MCMURRAY, ROBERTS, HEMING & WYBORN

A PARTNERSHIP OF INCORPORATED PROFESSIONALS  
 CHARTERED ACCOUNTANTS

SUITE 200 - 17618 - 58th AVE.  
 SURREY, B.C. V3S 1L3

PHONE (604) 576-9121  
 FAX (604) 576-2890

## GALLERY MANAGER'S REPORT

By Nancy Clayton

Well...What can I say? This summer was definitely not on cruise control. But I said all that last summer, I'm sure. And the speed at which time flies is not news. Part Two of the Summer Gallery was even better than Part One and we were sorry – as were many visitors and members – to see it taken down – partly because it marked the season change too, probably. Anyway, the final tally on painting sales just during the six weeks of the Summer Gallery was 13 in July and 20 in August and we were very pleased to hear from many tourists from distant places that our exhibited paintings were among the best seen anywhere – and such.

Those same tourists bought 150 of our postcards depicting **Julieann McGuinness' STROLLING GASTOWN** – in the four months since we put it out in the gallery. It is encouraging to think that information on the backs of those cards about the FCA and one of our members is fanning out in 150 different directions and that the postcard is on its way to paying for itself and then hopefully foot the bill for printing 1998's postcard, as well. Many of you are, of course, working on your paintings already to enter in next year's Postcard Picture Show (theme: From BC Waters).

The lucky winner of the raffled painting **MARSH WREN** by **Robert Bateman** SFCA was Tim Batiuk of North Vancouver who was delighted with his prize. We extend Mr. Batiuk's appreciation as well as ours to **Robert Bateman** for his very generous donation of the painting. The funds raised through the sale of the raffled tickets will go towards the costs of installing climate control to protect all the wonderful artwork that moves in and about and out of the Federation Gallery (not to mention the

somewhat perishable capabilities of the volunteers and staff!) So a great big thank you to all of you who bought tickets, too. We are gearing up for this year's second raffle. The winning ticket will be drawn at the Opening Reception of the Christmas Small Picture Show and someone will take home a watercolour by **Jeane Duffey** SFCA.

Speaking of the Christmas Small Picture Show – the deadline for slides is November 8, 1997. Also, remember that for the first time this year we are inviting those of you who do miniatures (or even those who have not, yet) to submit one or two in the Christmas Show. To be "miniature" the image must be 3 x 4 inches or smaller (ie. 12 square inches) and because of the difficulty in photographing such a small image the jury will accept the painting in lieu of the slide **FOR THE MINIATURE ENTRY ONLY**. The number of entries in this show is still 1 or 2 per member so if you enter 1 or 2 miniatures you can enter 1 or 0 small pictures or vice versa. If you are entering small pictures remember these images must be 11 x 15 inches or smaller (ie. 165 square inches).

In the meantime, hope you all had a very resourceful summer and have a colourful fall. Remember to check out the **Fall Flavours Show** – the new and sixth juried show this year.

*"Freedom of expression is important;  
but that freedom comes from discipline,  
and from total familiarity with one's tools.  
No artist, whether in dance, music,  
or painting, can truly be free to express  
himself if bogged down in a continuous  
struggle with technical problems."*

- Brian Travers-Smith  
FCA NEWSLETTER, Sept. 1981

### CLIFTON N. CHU

*Chartered Accountant*

**Clifton N. Chu, B.Com., C.A.**

The Clock Tower Building  
Suite 210 - 1501 West Broadway  
Vancouver, B.C. V6J 4Z6  
Telephone: (604) 736-5266



**RICHARDS BUELL SUTTON**

300 - 1111 Melville St.  
Vancouver, B.C.  
Canada V6E 4H7  
**Telephone** (604) 682-3664  
**Direct Line** (604) 661-9209  
**Fax** (604) 688-3830

**Michael D. Sawyer**  
Barrister & Solicitor

BARRISTERS • SOLICITORS • NOTARIES PUBLIC • TRADE MARK AGENTS

# Liquitex Acrylics



*Also on sale for the  
month of October:*

- Gamblin Artists' Oil Colours
- Unprimed Canvas by the Foot
- Holbein Watercolours.
- Deluxe Table Easel #305
- Winsor & Newton 140 lb. Medium Watercolour Paper
- Opus Metal Exhibition Frames
- Canson Archival Photo Books

**Sale prices in effect from October 1st to 31st, 1997.**

## OPUS

## FRAMING & ART SUPPLIES

**VICTORIA**  
512 Herald St.  
386-8133

**KELOWNA**  
1623 Pandosy St.  
763-3616

**LANGLEY**  
20484 Fraser Hwy.  
533-0601

**GRANVILLE ISLAND**  
1360 Johnston St.  
736-7028

**Canada Toll Free:**  
1-800-663-6953  
Fax: 731-3519

**NOW OPEN**

### Opus 1997 November Workshops

AT EMILY CARR INSTITUTE OF  
ART & DESIGN, ON GRANVILLE ISLAND.

- 1) **Delight in Drawing**  
with *Bettina Sluzki Lewis* - Nov. 15th
- 2) **Lights Fantastic with Decorative Papers**  
with *Catherine Shapiro* - Nov. 15th or 29th
- 3) **Gilding**  
with *Brian Dedora* - Nov. 16th
- 4) **Decorating Papers**  
with *Maureen Elston* - Nov. 16th
- 5) **Relief Printing**  
with *Richard Tetrault* - Nov. 22th
- 6) **Painting with Water-soluble Oils**  
with *Lyle MacDonald* - Nov. 22th
- 7) **Monoprinting**  
with *Richard Tetrault* - Nov. 13rd
- 8) **Pen, Ink and Watercolour**  
with *Lyle MacDonald* - Nov. 23rd
- 9) **Creative Compositions in Watercolour**  
with *Jack Campbell* - Nov. 29th & 30th
- 10) **Acrylics on Glass**  
with *James Gladden* - Nov. 30th

**TO REGISTER FOR WORKSHOPS CALL  
(604) 736-7694**

**Mon. - Fri. 10:00am to 4:00pm**  
**Registration opens Oct. 6th.**

## CANADIAN SCENE

Chapter News & Events

### ARROWSMITH CHAPTER

By Pat Audley

October 21st is opening day for our joint exhibition at the FCA Gallery with the Comox and Campbell River Chapters. Remember to deliver your accepted works to **Wanda Ashmore** on Sunday, October 19th for transporting to Vancouver.

By now, our members should be painting for our November 17th show, "Chapter and Verse" at the Old Schoolhouse in Qualicum Beach. Paintings must be accompanied by an appropriate piece of poetry or prose depicted in the painting.

The local Rotary Club is producing a fundraising calendar featuring works by local artists. **Disa Hale, Wanda Ashmore, Lynn Orris, Elena Travanut, Pat Holland, and Pat Audley** were among those chosen. Guess what we're all using as stocking stuffers this year.

Some of our members displayed and sold their work this past summer at the Community Arts Council Gallery in Parksville. It is a new venue, slowly becoming a good place to "hang". They are having a "Junk Sculpture" exhibition (both two and

three dimensional) opening on Halloween and running to November 9th. Sounds like a chance to try something funky and fun.

### COMOX VALLEY CHAPTER

By Hans C. Larsen

Our best wishes to **Marty Brown** for a speedy recovery from his recent surgery in Victoria. Marty expects to be back in business within a month, cutting hair and, of course, painting.

Our twice monthly workshops got off to a good start on September 10. Following a short meeting, **Elsie Griffiths** demonstrated how to prepare a 35mm slide for jurying. Slides were also shown of chapter entries in the Mid-Island Chapters show to be held at the FCA Gallery in late October.

Members were urged to produce affordable art such as cards and sketches, prints and miniatures paintings for our pre-Christmas show at the Filberg Gallery October 28 to November 10. If successful, this type of show could be an annual event.

Our Filberg Festival Raffle was a huge success we sold over 1600 tickets. **Gordon Hynes' "Orca Watching"** was the real drawing card. **Norman Warren** of Campbell River was the lucky winner.

Welcome aboard to **Verity Purdy** and **Robert Lundquist**. Verity has moved over here from the



**WINSOR & NEWTON**  
*Artisan*  
WATER MIXABLE  
OIL COLOUR

**ASSOCIATED  
GRAPHIC SUPPLIES LTD.**

**NEW** from Windsor Newton  
**Water Mixable  
Oil Colour**  
INTRODUCTORY SPECIAL  
**20% OFF**  
NOW AT ASSOCIATED  
GRAPHIC SUPPLIES



**WINSOR & NEWTON**  
*Artisan*  
WATER MIXABLE  
OIL COLOUR

Cadmium Yellow Pale Hue  
Series 1  
Windsor & Newton Artisan Water Mixable Oil Colour is a high quality, professional grade oil colour. It is formulated with the finest pigments and is available in a wide range of colors. It is suitable for use in a variety of media, including water, oil, and acrylic. It is also suitable for use in a variety of applications, including painting, drawing, and printing.

30 ml e - 25 U.S. fl. oz.

Located just off Granville Island on West 4th (Green Awning)

1664 WEST 4TH AVE, VANCOUVER 733-1331

mainland and Bob is well known as the owner of Midnight Studios.

### NANAIMO CHAPTER

By Gerda Hofman

Our Annual General Meeting is on Saturday November 8th and there will be elections for President, Secretary, and Member in charge of Workshops. Please volunteer for a position on the Board: it is a good way of getting to know people in the visual arts.

#### Members News:

**Denise McNeill** is the featured artist in the Art 10 Gallery during October.

"*Framed/Unframed*" an exhibition of paintings and drawings by **Gerda Hofman** will be held at the Old Schoolhouse in Qualicum Beach. The show will run from October 20 to November 15, 1997. There will be an opening reception on Saturday October 25th between 2 and 4 pm.

### VICTORIA CHAPTER

By Alan Mark Cross

We would like to thank the Federation Gallery in Vancouver for giving our Chapter such a wonderful 2 week show this summer. They virtually designated the entire gallery to our show, and those of us who were able to go over and see the show thought it was beautifully hung and a tribute to our Chapter artists. Also appreciated is the photographic sampling of our Chapter's work, photographed by **Sid Dyke**, AFCA that was included in the September issue of the *Canadian Artist News*. The final leg of this traveling show ended at the University of Victoria where we had five more sales for a total of eight paintings sold from this traveling show. The winners of the People's Choice Awards from the University of Victoria portion of the show were: First Place to **Alan Mark Cross**, for his painting "*The Gathering Place*"; Second Place to **Marney Ward**, for her painting "*Peony Blowing*"; and tied for Third Place was **Gary MacDonald** for his painting "*The Bride*", and **Merrill Cook** for her painting "*Springtime in Victoria*".

There is very good news for our local Chapter - we are going to start having monthly meetings for the general membership and our first guest speaker will be **Robert Bateman**, SFCA. We are looking forward to hearing this gifted artist and speaker. Dates and times will be made available as soon as they are confirmed.

We are planning a five day workshop in October

with well known island artist **Bruce Cryer**, SFCA. For information on dates, times and costs, please phone **Laura Carberry** at 479-1632 or **Alan Mark Cross** at 658-8102. Call early as we expect this class to fill rapidly.

#### Members' News:

The Habitat Acquisition Trust (HAT) is creating a conservation legacy by protecting locally significant habitats throughout Southern Vancouver Island and the Gulf Islands. To this end, they are having an art show and sale titled "*The Nature of Island Artists*" at Goldstream Provincial Park Visitors Centre between September 20 and October 12. Last year the show had more than 13,000 visitors and this year they are expecting more. Participating FCA member artists are: **Robert Bateman**, SFCA, **Alan Mark Cross**, **Len Dawson**, **Les Funk**, **Doreen Green**, **Gillian Ley** and **Molly Whitelaw Reid**. Also, **Robert Bateman**, SFCA will be the guest speaker on Friday, September 19th at the Sooke Harbour House for the \$150.00 plate dinner in support of HAT.

### FACES AND FIGURES STORY

By Nancy Clayton

Shortly before our recent Faces and Figures Show **Bruce Harper** called the gallery looking for a portrait artist. We suggested he come down and go through the slides from the show. He took a liking to **Tom Huntley**, AFCA's *The Hat Lady*. Tom accepted the commission.

As Tom completed the project, which consisted of three portraits (singles of the children and one group), the practical joke started to take shape. We conspired with **Bruce** to hang the pictures in the gallery during the show, **Bruce** would then arrange for he and his wife, **Robin**, to visit under the guise of looking for a portrait artist.

**Robin** sauntered through the gallery and arrived in front of portraits of her own children. Here, in a gallery she had never heard of before were pictures of her children. A quick glance to the volunteer's desk and broad smiles revealed the secret. "Where is the stinker!" she was heard to ask. **Bruce** was grinning from ear to ear at the back of the gallery.

**Bruce** and **Robin** both saw the finished work at the same time, bringing an end to **Bruce's** Mother's Day surprise.

## FALL JURIED SHOW HONOURS

By Steven Laszcz

With this issue of the news I thought it was time to feature some of the artists that have won awards for their work from FCA juried shows.

I have been asked how these awards are selected, when and by whom. The jurors make the selection at the second jurying. They pick among themselves the paintings that they feel best represents the show.

### FIRST PLACE

Han Jiang (Hart Chiang)

Han was born in Guangzhou China in 1949. He received his M.A. degree on Interior and Landscape design from Guangzhou Academy of Fine Arts in 1986.

Among his other honours: First Prize for the 1996 Federation Christmas Small Picture show and an Honourable Mention for the FCA 1997 Winter Exhibition.

For Han painting is an occasion for reconstructing the world of appearance in terms of a series of discreet impressions animated with glowing

colours. He is interested in balance, and the relationship of nature and man. (see front cover for sample work).

### SECOND PLACE

Patricia A. Peacock, AFCA

White Rock British Columbia has been home to Pat and her family for the past fifteen years, though she hails from Gimli, Manitoba. Pat's interest in drawing and painting began in childhood. She sought a formal art education through Fine Art Programs from Kwantlen College, Langara College, the University of B.C., the FCA, and Coupeville Arts in Washington.

Pat achieved her AFCA signature status in March of 1996, she has participated in many juried and group shows.

In 1996 she was named Heritage Canada Artist an award that honours Canadian artists of Nordic descent. The poster produced for Heritage Canada was distributed to 80,000 people across Canada.

Anyone who has met Pat will surely remember her infectious laughter and willingness to share her insight. (see picture inside front cover)

### THIRD PLACE

Henry Tsao

Born in Shanghai, Henry arrived in Canada in 1967.

It wasn't until after he received his education as a Chartered Accountant that Henry began his pursuit of painting and drawing. He is self-taught and continues to paint seriously in his favourite medium, watercolour.

Henry is an Active Member of the FCA, his work was selected for the FCA Travelling Show and has been juried into many exhibitions. (see picture inside front cover)

# OSCAR'S

Vancouver's Art Book Store

The Best Selection of  
Coffee Table Art Books in BC

Books on How to Paint, Draw, Oils,  
Watercolours, Acrylics, Sculpture, Printing,  
Jewelry, Animation, Design and Ceramics.

Also a small selection of Art Supplies.

1533 West Broadway (at Granville)

Vancouver BC V6J 1W6 (Mail Orders Welcomed)

(604) 731-0553

Mon to Fri: 10-8 · Sat: 10-6 · Sun: 12-6

*"I consider life drawing  
the most demanding and most disciplined  
endeavor for any student to undertake;  
at the same time the most rewarding.  
Each student's training is completely  
personal and no matter what his or her  
eventual style or mode of expression  
may be, there is no substitute for acquiring  
a basic skill in drawing the human figure.  
The ultimate goal is to be able to  
'think' with the hand..."*

- Robert Cenedella, Art Student's League, N.Y.





**TIME FREEZES**  
acrylic collage, 14"x9.5"  
*Kathy Kelly, AFCA*

**Work From**  
**ANNUAL "FALL" JURIED**  
**Exhibition**  
**September 2 to 14, 1997**  
(pages 9, 10, 11 & 12)

**JEWELLED REFLECTIONS**  
watercolour, 16"x24"  
*Roberta Coombs*



**OUT OF THE DARK**  
watercolour ink, 17"x12.5"  
*Patricia Logie, AFCA*



AUTUMN SCENES  
watercolour ink, 12.5"x12.5"  
*Kenson Seto*



SUNSHATIONS watercolour, 20.5"x13.5"  
*Norma Blann*



POTS OF GOLD  
watercolour, 15"x22"  
*Grant McLean*

WILLIAMSWORTH oil/canvas, 16"x20"  
*Fred Campbell*



NORA'S GARDEN oil, 14"x18"  
*Sheila Adams*

LOOKING AT FOOD  
watercolour on silk, 18"x18"  
*Jeanie Tang*





COMING HOME  
watercolour, ink, pastel, 28"x22"  
*Susan Viccars*



AEGEAN VILLAGE  
pen & ink, watercolour, 19"x19"  
*Anna kopkok*

RABBIT BUSH  
watercolour, 12"x16.5"  
*Peggy Evans*



**CALENDAR OF EVENTS &  
JURIED EXHIBITIONS  
at FEDERATION GALLERY**

1241 Cartwright Street, Vancouver, B.C.  
Daily except Mondays  
**WINTER HOURS**  
(10:00a.m. to 4:00 p.m.)

**September 16 to October 5**

**"SIGNATURES II"**

Bruce Cryer, SFCA  
Ardath Davis, SFCA, KA  
Daniel Izzard, SFCA  
Joyce Kamikura, SFCA, NWS  
Law Yai Hin, SFCA

Senior Members Group Exhibition

**October 7 to October 19**

**"FALL FLAVOURS"**

"New" Annual Juried Theme Exhibition  
(Active Status Only, All Media)  
Slide Deadline: Sat. Sept 6, at 4:00 p.m.

**October 21 to November 2**

**"ARROWSMITH / COURTENAY / COMOX /  
CAMPBELL RIVER CHAPTERS"**

Chapter/Juried Exhibition

**November 4 to November 16**

**"BRUSHSPOKE"**

Ed Loenen, AFCA / Niels Petersen, AFCA  
Group Exhibition

**November 18 to November 30**

**ANNUAL "MEDAL" JURIED EXHIBITION**  
SFCA/AFCA Status members only (All Media)  
AFCA Slide Deadline: Sat. Oct. 18 at 4:00 p.m.

**December 2 to December 24**

**"CHRISTMAS SMALL PICTURE SHOW"**

Annual Juried Exhibition (All Media)  
Active, AFCA, and SFCA status members  
Slide Deadline: Sat. Nov. 8th, at 4:00 p.m.

*"We are all potentially creative,  
but only those who have become  
creative realize it."*

- Gowan, Demos, Torrance  
(Teaching for Creative Endeavour)

**EXHIBITION/SALE - CALL FOR ENTRY**

**DECEMBER 2 TO 24, 1997**

at Federation Gallery, Vancouver

**Annual "CHRISTMAS  
SMALL PICTURE SHOW"**  
JURIED EXHIBITION/SALE

Any Medium - Open to SFCA-, AFCA-,  
and Active status members.

**SUBMISSIONS BY SLIDE ONLY:** Must be 35mm, colour, in a 2"x2" mount. Glass slides not admissible. No tape or labels (except non-protruding silver tapes on the film or white tape on the mount, not permanently affixed). Indicate the Name of Artist, Title, Image Size, Medium and Price on the Slide and indicate what direction is up - as per illustration.

ARTIST NAME	TOP
IMAGE TITLE	↑
□	
IMAGE SIZE	PRICE
MEDIUM	

**Note: ENTRY FEE:** Members may submit up to two (2) slides for an entry fee of \$10.00 each slide.

**SLIDE ENTRY DEADLINE:** Between 10:00 am Tuesday, November 4 and Saturday, November 8, 1997 at 4:00 pm. Along with entry form(s), send a self-addressed, stamped #10 (4-1/8"x9-1/2") envelope (SASE) for return notice of jury.

**ACCEPTED ARTWORKS\*\*:** Advice of the jury's decision will be given by mail, along with your receipt (by means of your SASE). If accepted, your original painting is due in the Gallery for final jurying during the week preceding the show (no later than 4:00 pm on Sunday, **November 30, 1997**). The FCA reserves the right to keep slides of accepted paintings for its' permanent collection.

**Declined Works:** Should the painting be declined, the slide(s) will be returned in your envelope, with your receipt (in your SASE).

**\*\*Artwork:** Must all be framed and wired ready for hanging. Note: Wire should not be less than 4-1/2" down from the centre-top of the frame. Glass with clips not acceptable.

**No "NFS" WORKS WILL BE ACCEPTED,** or works previously hung at this Gallery in a juried show.

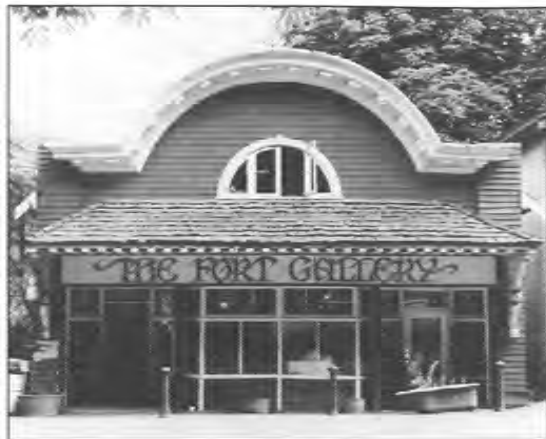
**Loss or Damage:** The FCA will take the utmost care in handling works submitted, but can accept no responsibility for loss or damage. Insurance is the responsibility of the artist.

**Commission:** A 35% commission will be deducted from the selling price.

## WESTERN EXPOSURE

News of Members' Upcoming Events

Suzanne Northcott and Brock Smith are putting the finishing touches to their new gallery in Fort Langley. *The Fort Gallery* is in a funky old heritage building.



Two of Joyce Kamikura NWS, SFCA paintings, "Rain in Town" (watercolour) and "Europa"



ZheeClay Arts is offering the very latest in print reproduction.

- GICLEE PRINTS -

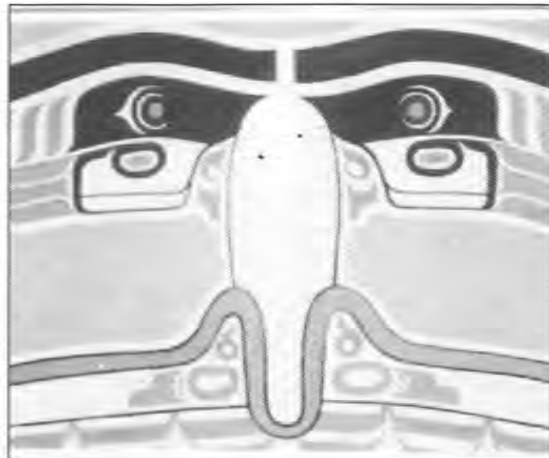
Giclee printing enables an artists to reproduce artwork in any size and full color onto canvas or watermedia stock in single or multiple quantities. In house custom framing at wholesale prices.

ZheeClay Arts Ltd.  
1618 West 75th Avenue. Vancouver. B.C. V6P 6G2.  
Tel: (604) 263-2902 Fax: (604) 263-1568  
e-mail: zc@bc.sympatico.ca

(acrylic) are featured in newly published books, "PAINTING COMPOSITION" and "PAINTING COLOR" by Rockport Publishers of Massachusetts. They are both 8 1/2" x 11" hard cover editions featuring 144 pages of full-colour selection that showcase examples of the use of composition and colour in watercolour painting.

Joyce was also featured with a full colour image of a painting in *The Mississauga News* of Ontario

Donna Baspaly, SFCA will be having a show of recent works at the Pan Pacific Araki Gallery from October 4th to 10th. She will also be a judge for the International Miniature Art Contest held by the same gallery. Hours 10 am to 4 pm.



After all these years Stafford Plant, SFCA still continues to create new and exciting images. This original totemic design (above) is just one small sample of recent works.

The Imperial War Museum, in London England has recently acquired a portrait of Odette Churchill done by Elizabeth Smily, SFCA, CPS, FRSA. You can see more of her work in an upcoming show at The Ferry Building. The show will open on October 28, 1997 and run until November 16th a reception is planned from 6 pm till 8 pm on the 28th.

Congratulations to Margo Cuthbert and Andrew McDermott both of these Fed members have recently achieved signature status with the Pastel Society of Canada.

The winner of the Robert Bateman, SFCA oil painting "Marsh Wren" was Tim Babiuk of North Vancouver. Tim has just retired and hopes all of his luck as a retiree is as good as this.

## THE FAMILY THAT PAINTS TOGETHER

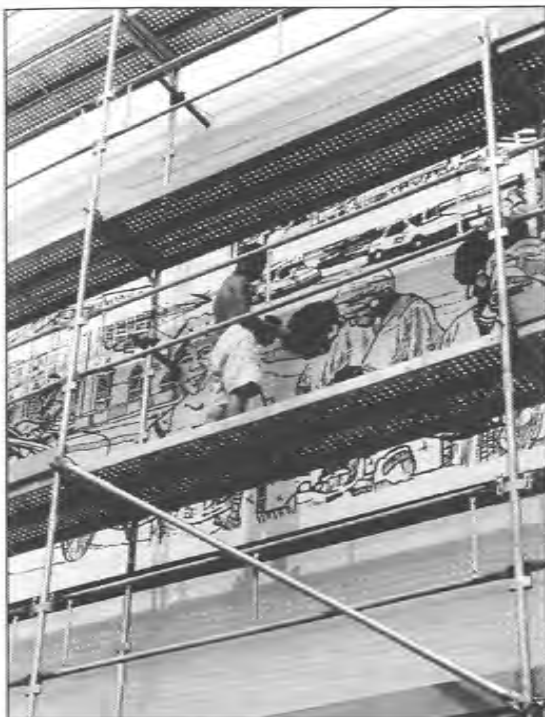
By Janice Robertson

This summer when Alan Wylie, SFCA went to York, Pennsylvania to do his biggest mural ever (120' x 24') he called out family reinforcements. Step-son James and wife Janice Robertson, SFCA each spent a few weeks helping on the project, which featured the theme "The York County Fair".

This was a great opportunity for James, who just finished high school and is a budding mural artist in his own right. This is Alan's 20th mural and it will soon be followed by number 21 in Magnolia, Arkansas.

Mike Svob, SFCA, his wife Nancy and their children Elliot and Sienna, were in York at the same time as the Wylies, so that Mike could produce his second mural in the city. His mural was based on the theme of historical buildings in downtown York.

*James is seen here working on the huge(!) 120'x24' mural in York, Pennsylvania.*



### GREETING CARD BLANKS

#### GET READY FOR CHRISTMAS!

- Deckle-edged cards & envelopes • 100% cotton rag
- White or Off-white • Stain deckled edges with paint or markers!
- Painting • Printmaking • Collage • Photos

20 cards & 20 envelopes (5"x7") \$9.00

250 cards & 250 envelopes (-5%) \$106.87

Non Deckled-20 Cards & 20 Envelopes \$6.00 pkg.

#### DANIEL SMITH WATERCOLORS

103 Extra Fine Colors 15 ml. tubes (3 series)

1) 8.50 2) 10.72 3) 14.11

CALL FOR INFORMATION & MAIL-ORDER FLYER

herald street  
**ARTWORLD** (250) 384-3766

Toll-free: 1-800-669-5188 E-mail: [artworld@pinc.com](mailto:artworld@pinc.com)

655 Herald Street Victoria, B.C. V8W 3L6

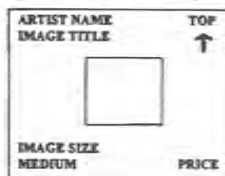
## EXHIBITION/SALE - CALL FOR ENTRY

November 18 to 30, 1997  
at Federation Gallery, Vancouver

### Annual "MEDAL SHOW" JURIED EXHIBITION/SALE

Any Medium - Open to SFCA-  
and AFCA-status members only.

**SUBMISSIONS BY SLIDE ONLY:** Must be 35mm, colour, in a 2"x2" mount. Glass slides not admissible. No tape or labels (except non-protruding silver tapes on the film or white tape on the mount, not permanently affixed). Indicate the Name of Artist, Title, Image Size, Medium and Price on the Slide and indicate what direction is up - as per illustration.



**Note: ENTRY FEE:** Members may submit up to two (2) slides for an entry fee of \$10.00 each slide.

**SLIDE ENTRY DEADLINE FOR AFCA MEMBERS:** Between 10:00 am Tuesday, OCTOBER 14 and Saturday, OCTOBER 18, 1997 at 4:00 pm. Along with entry form(s), send a self-addressed, stamped #10 (4-1/8"x 9-1/2") envelope (SASE) for return notice of jury.

**ACCEPTED ARTWORK\*\*:** Advice of the jury's decision will be given by mail, along with your receipt (by means of your SASE). If accepted, your original painting is due in the Gallery for final jurying during the week preceding the show (no later than 4:00 pm on Sunday, November 16, 1997). The FCA reserves the right to keep slides of accepted paintings for its permanent collection.

**Declined Works:** Should the painting be declined, the slide(s) will be returned in your envelope, with your receipt (in your SASE).

**\*\*Artwork:** Must all be framed and wired ready for hanging. Note: Wire should not be less than 4-1/2" down from the centre-top of the frame. Glass with clips not acceptable.

**No "NFS" WORKS WILL BE ACCEPTED,** or works previously hung at this Gallery in a juried show.

**Loss or Damage:** The FCA will take the utmost care in handling works submitted, but can accept no responsibility for loss or damage. Insurance is the responsibility of the artist.

**Commission:** A 35% commission will be deducted from the selling price.

## ORIGINAL PRINTS & REPRODUCTIONS

by Sam Black, SFCA, Prof. Emeritus of Education, UBC

While it is encouraging to note the growing public interest in collecting prints, there is some confusion and considerable misunderstanding as to what constitutes an "original print." Lack of information and knowledge or, in some instances, misinformation has led to questionable sales and disillusioned buyers.

The concept of an original print is not easy to define, however, it is universally recognized that an original print is, at least, a work conceived by the artist as a print which involves the artist throughout the process of creation and production. Today, with the vast array of technically precise mechanical reproduction processes readily available, it is more than ever urgent that clear differentiation's must be made between original prints and reproductions, in order to protect both artists and collectors alike.

To move towards an improvement in present practices and establish good standards. The *Professional Art Dealers' Ass'n. of Canada* has published recommendations to galleries, publishers, printers, print workshops, etc. Among these, is the following:

*"Correct labelling is the prime necessity. No definition can ever achieve what correct labelling can do.*

*"A clear differentiation can be made between an original etching, lithograph, silk-screen, woodcut, original offset, etc. (conceived by the artist as a print) and a photo mechanical reproduction of a work originally conceived by the artist in another medium. Fuzzy or vague terminology such as, 'Litho Print,' 'fine art print,' etc. must be eliminated since these terms are misleading and cause great confusion in the print market. A reproduction must be labelled a reproduction. It is important, however, that the buying public know when a work is a reproduction, especially so in the case of a signed limited edition reproduction."*

Other recommendations suggest labelling procedures for artists. It would be naive, as well as undesirable to say there is no place for reproductions; but they need to be recognized for what they are and labelled and priced accordingly.

Only by scrupulous care and correct labelling can the artist's originality and integrity be maintained and collectors reassured that their print purchases are authentic and come from a truly original print limited edition.

*This piece originally appeared in the July, 1981 issue of The Federation of Canadian Artists NEWSLETTER.*



## WHY PAPER ART BUCKLES IN A FRAME

by Greg Fremstad

Problems such as buckling, wet spots, image transfer and adhesion to the glass, may occur in picture framing. Various conditions may cause these problems - some of which may be controlled with certain framing procedures.

Understanding the cause will allow the professional framer to adjust framing procedures to avoid these common, potential problems.

The following is a list of conditions and their causes:

- Artwork should never be secured on all four sides, or tightly secured at the bottom. Restriction of movement is one of the primary causes of buckling. Paper expands and contracts with changes in temperature and humidity. There may be a greater change "across" the grain of the paper than "with" the grain.
- Paper art placed in direct contact with the glazing responds to humidity changes around its edge before the centre area. As the paper around the edge expands and contracts, buckling may occur.
- Glass transfers heat better than air does. Paper in contact with the glass will experience heat changes rapidly, whereas paper slightly away from the glass will be insulated by the air space. Slightly buckled paper does not contact the glass evenly across the entire face of the paper, thereby creating differences in heat and relative humidity in areas on the paper.
- When the room is hot, the areas in contact with the glass get slightly drier; the areas away from the glass remain humid. This slight difference in humidity may make the paper buckle.
- During severe temperature changes, humidity may condense on the inside of the glazing which may leave watermarks on the paper.
- Pressure from spring clips, or other fitting hardware, may force the paper to touch the glass. This may cause humidity differences around the edge of the paper which often causes buckling between the pressure points.
- Large paper art standing on its bottom edge instead of hanging from a hinge may bow out at the bottom.
- Artwork with inked and non-inked areas have

inherent buckling problems because the inked areas are somewhat sealed against humidity absorption compared with the non-inked areas.

- Watercolours and Japanese calligraphy pieces have inherent buckling problems because the paint expands then tightens the paper fibres, causing the unpainted area of the artwork to buckle.

These common problems are greatly reduced or stopped with sufficient air space between the art and glazing. Attention to fitting practices and the use of mats and spacers is required.

**FITTING:** In order to reduce pressure on the outside edges of the frame, use minimal pressure when installing the art in a wood frame. In metal frames, pressure may be minimized by using sheets of foam centre board or mat board as filler, instead of spring clips.

**MATS AND SPACERS:** These should be used to allow air circulation and to keep the item from touching the glass. Remember to allow room for expansions of materials within the frame.

*This article first appeared in the Summer 1994 issue of the Framers' Focus Newsletter published by Crescent Cardboard Company, who granted permission to reprint.*

*"Whatever your medium may be,  
or whatever the medium of your students, I  
believe that the main purpose of their efforts in  
the arts should be to convince them of the  
importance, first of listening carefully and trying  
to understand what is moving man from the  
inside, and then to make disciplined efforts to  
express it in external form, both for him to  
understand it better and for others to see."*

- Bruno Bettelheim

## MORE ARTIST COLORS



1016 Richards St. Vancouver, B.C. V6B 3B9  
Phone 681-7351 Toll Free 800-663-1215 Fax 681-6185

**BEHNSEN GRAPHIC SUPPLIES LTD.**

## CLASSIFIED ADS

Rates for Ads placed in this column: TEN CENTS PER WORD PER ISSUE (+ 7% GST). Prepayment required. Simply submit your Ad Wording along with Cheque (payable to FCA) by 1st day of month preceding desired month of issue.

### INSTRUCTIONAL VIDEOS

*"Picture This Way in Watercolour & Mixed Media"*  
with Mike Svob (W/C) and Joyce Kamikura (M/M);

*"Picture This Way in Acrylic & Oil"*

with Robert Genn (Acr) and Alan Wylie (Oil)

Each video has two 30-min technique tutorials. Order by name and enclose cheque for \$44.95 (ea.) Canadian funds + applicable \$3.15 GST and \$3.15 PST + \$6.00 S/H, to Federation of Canadian Artists, 1241 Cartwright St, Vancouver, BC V6H 4B7 (Or, pick up your copy at Federation Gallery and save \$6.00 S/H costs.) Full Copyright reserved.

**LEARN TO PAINT WITH VIDEO TAPES** - (Impressionistic oils) Six tapes with Neil Patterson ASA SFCA OPA. "Flowers in Window", "Reflections", "Summer Landscape", "First Snow", "Flowers", and "Foothills Ranch", From start to finish, NO CUTS. \$39.95 each plus GST (\$2.80) and (\$6.00) S/H. Order Box 299 Bragg Creek, Alberta, T0L 0K0.

### PUBLICATIONS

Enhance your water media experience by subscribing to our newsletter, **THE WATERCOLOUR GAZETTE**. For a Free sample copy or information on our watercolour self-help articles, send \$2.00 and your name and address to: KOR Publications, P.O. Box 66047, RPO Unicity, Winnipeg, MB R3K 2E7. Fax 204/889-6467 or E-mail kor@ solutions.mb.ca.

### WORKSHOPS

**PALETTES PLUS WORKSHOPS ON WHIDBY ISLAND, WA** with Carole Barnes, Judi Betts, Katherine Chang Lui, Virginia Cobb, Pat Deadman, Polly Hammett, Carla O'Conner, Alex Powers, Ken Hosmer, Diane Maxy, Ann Templeton, Marilyn Timms, Eric Wiegert, Neil Boyls, Roger Broer, Homer Hacker, Ben Konis, Jane Schoenfeld, Bob Rohm, Arleta Pech, and more. For a free catalogue: Coupeville Arts Center, Box 171FC, Coupeville, WA 98239 (360) 678-3396.

**NEW LEADING EDGE ART WORKSHOPS** offers your favorite instructors in beautiful Calgary, Alberta; from October 1997 to June 1998 at very competitive prices. Includes Brian Atyeo w/c and acrylics, Bill Duma oils, Brent Laycock acrylics and watercolours, Christopher Schink watercolour, and Nita Leland collage and colour theory. For a free brochure please call (403)238-5678 or write to: Leading Edge Art Workshops, 35 Oakmount Place, SW, Calgary, Alta, T2V 4Y2

**TWO WEEKS OF ART IN MEXICO** Jan. - Feb. - March '98 in the quaint fishing village of La Manzanilla. Paint seascapes with Nicola Arena or get back to the basics of drawing with Jeffrey Howard. Included in the cost of \$1495 (US) are: art lessons: sketching trips; tours of the

areas attractions; meals; accommodations; and airport pick-up/return.

Art lessons take place on the rooftop palapa of La Casa de Maria with its breathtaking views of the ocean, village and jungle. Accommodations are close to miles of pristine beach.

See uncommercialized Mexico and enjoy the friendly ambiance.

Our goal is to make sure you have fun and learn something new in art. Come and visit; swimming and snorkeling are great or just sit on the beach and ENJOY.

For full details call Jeff or Carolyn Howard at Eagleshore Studios (250) 248-9311.

### DEMONSTRATORS' OPPORTUNITY

**1997 DEMO OPPORTUNITY FOR QUALIFIED MEMBER-ARTISTS** on Mondays - 1-4 p.m. at Federation of Canadian Artists' Gallery. Call Pamela Leaman 685-1967.

### ART PRINTS

**LITHOGRAPHED LIMITED EDITION PRINTS, ARTCARDS AND TEARSHEETS.** We have the expertise to produce fine printing; we have worked with many artists with a wide range of styles and techniques. Our prices are very competitive for this class of work. For more information please call Central Graphics Inc. at (604) 852-1171 or 857-2682 (toll free from Greater Vancouver, except the North Shore), or fax (604) 852-9145.

### PAINTING VACATIONS

**CABO SAN LUCAS-BAJA-CHRIS MACCLURE VACATION** and paint in beautiful Baja. Studio space available. Accommodation can be arranged. Prices vary according to your needs. Please contact, ph/fax 604-669-3774 before Oct. 15th. For information after Oct. 15th, fax Mexico: 011-52-114-2266-7.



*"Many (An object) must have a multitude of parts so related to one another as to impart a positive simple immediate quality to their totality ... If that quality be such as to nauseate us, to scare us, or otherwise to disturb us to the point of throwing us out of the mood of aesthetic enjoyment ... Then the object remains none the less aesthetically good, although people in our condition are incapacitated from a calm aesthetic contemplation of it."*

- Charles Pierce



Honourable Mention  
SOUS-BOIS  
pastel, 17"x21"  
*Martine Gourbault*



DOLLS AND MASKS  
oil/canvas, 30"x48"  
*Mila Kostic*



**Honourable Mention**  
**MOUSEHOLE #3**  
**THE VILLAGE**  
**IN WINTER**  
acrylic, 18"x24"  
*Peter Blewett*



**Honourable Mention**  
**FLORAL**  
acrylic, 22"x30"  
*Sue Williamson*