

# 365 ONLINE EXHIBITION AND CALENDAR CONTEST

**Submission Deadline: May 12, 2024**

Online-Only, Juried Exhibition

**Exhibition: June 1 - 21, 2024**

**Best Sculpture: \$100 CA**

Second Place, Third Place and  
3 x Honourable Mention Awards in Title

**Top 14 Artworks Feature in the  
2025 Art Calendar**

Artwork must be horizontal orientation

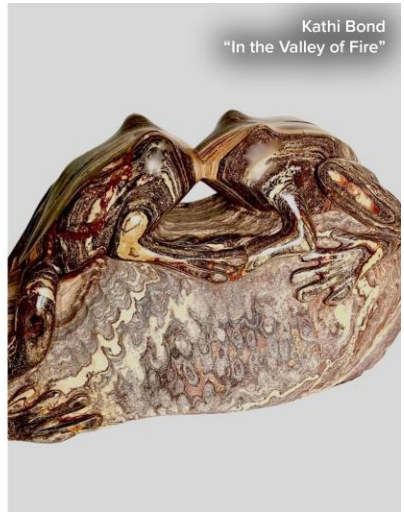
**Non-Qualifying for Signature Status**

**Submit at [artists.ca](https://artists.ca)**

FEDERATION  
des ARTISTES  
CANADIENS



FEDERATION  
of CANADIAN  
ARTISTS



Kathi Bond  
"In the Valley of Fire"

## ABOUT THE EXHIBITION

Submit your artwork for consideration in the official, annual FCA Art calendar. Sales of the calendar support the Federation's fundraising efforts.

The top 14 artists at jury receive a calendar feature and all artists juried in successfully, feature in the online gallery at [federatingallery.com](https://federatingallery.com) The top 14 artists are drawn between the 2D and Sculpture intakes.

Oversize, Available, Not for Sale and Sold artworks are all permitted!

Submitted images must be horizontal in orientation to fit the format of the calendar.

## AWARDS

**Best Sculpture: \$100 CA**

**Second, Third Place and 3 x Honourable Mention Awards in Title**

## GUIDELINES SPECIFIC TO THIS EXHIBITION

**PERMISSABLE SCULPTING MEDIA: stone, metal, glass, clay, wood, or ceramic.**

**EXCLUDED SCULPTING MEDIA: ivory, plaster, wax, reusable modeling compound, found objects, electronics, holography and other projected media, and fragile modeling media such as papier-mâché and salt dough.**

Submitted artworks must demonstrate concept, manipulation of materials, and evidence of the aesthetic judgment of the creator. Artwork must be "one-of-a-kind", meaning that the production techniques exposes each work to the possibility of uniqueness and where the reproduction series is limited to less than 200. All artworks must be finished to an archival standard and last up to a hundred years without a controlled display environment.

**SCULPTURE SIZE:** Open to sculptures of any size and weight

**SUBJECT MATTER:** All subjects permitted

**STYLE:** All styles permitted

**COMPOSITION / SUBSTRATE ORIENTATION:** Only horizontal compositions / substrates are permitted to this call. If you submit a piece with a vertical composition / substrate it will be declined without jury or refund.

### **GENERAL FCA SUBMISSION GUIDELINES**

**COPYRIGHT AND STANDARDS:** While using photographs as reference for your artwork is a long-held accepted practice, using stock imagery or photographs taken by professional photographers other than the submitting artist are not permissible in our organization, even with permission or paid licensing.

Artists submitting to Federation Gallery must sign a contract that declares their artwork is not a copy, derivative or based on the work of others or in any way an infringement of copyright. The FCA will reject submitted artwork that appears to be in violation of copyright law. The FCA reserves the right to refuse entries that are not accurately represented by the digital photograph submitted for jury.

Artists may not enter a piece that was the result of a workshop or class. Only work that has not been accepted previously into another Federation online-only exhibition may be submitted. Work that has shown in a Chapter exhibition may be submitted, as long as it did not receive a prize award at that Chapter exhibition. Work that has displayed in the Federation Gallery may also be submitted, so long as it did not receive an award there.

**INSURANCE:** The FCA does not provide insurance for artwork. Artists are responsible for arranging their own insurance.

**JURY:** Entries will be reviewed a panel of three jurors. Please check the submission page for juror names. Images will be reviewed independently online by each juror. All artists will receive emailed notifications of their results. Artists attempting to contact jurors directly in relation to their submission will be removed from the exhibition.

Your submitted pieces will receive one of the following jury results:

**Accepted** –artwork has been chosen for exhibition online and in gallery

**Declined** - artwork was not chosen for exhibition this time

**PRICING:** This call for entry is open to available, sold and not for sale artwork. On the submission pages you will be prompted to enter a price, regardless of the sales status of the piece. In our experience, sold or not for sale artworks listed with a price encourage enquires for commissions and similar pieces as the client already knows where they stand in relation to your asking prices. Artists cannot change submitted prices or availability (for sale to not for sale etc) **at any time.**

The minimum price for artworks is \$200. While there is no maximum price, if the artist cannot provide evidence of a recent sale in that price range, artworks with artificially inflated prices will be removed.

**SALES:** For artwork that is for sale, artwork is under contract with the Federation effective of the date notification emails are sent. If a sale is made artists will be informed by phone or email. By submitting their artwork to this call the artist agrees to allow the Federation to negotiate a sale on their behalf including up to 10% off of the artist's submitted sale price. Following a sale, payment to artists will be made by cheque. **COMMISSION RATE: 65% to artist, 35% to Federation**

The Federation Sales Team and Art Handler will work with artists to ensure pieces arrive to their clients. Clients are responsible for absorbing the shipping and delivery costs of their purchases.

**SUBMITTING INFORMATION:** Submitted images that are blurry, poorly cropped, display a background/frame, were made in error, or are the wrong orientation will be declined without refund. When submitting online, crop your image to exclude visible edges of substrate.

Entering a description is optional. The description of your piece should be one-two sentences long, aiming to encourage sales. This description will be accompany your artwork on [federationgallery.com](http://federationgallery.com) Please proof read and spell check it. Artists cannot change details on their submission after the deadline for entries has passed. Attempts to change submitted information after the deadline, or when the artist delivers will not be honored.

**REMOVAL FROM EXHIBITION:** The Federation reserves the right to remove artwork from any exhibition at any time. If an artist withdraws or sells an "Accepted" artwork after receiving their notification email, for any reason, the artist is subject to a \$100 removal fee. Artists will not be able to participate in future Federation exhibitions until this fee is paid.

Artists removing "Accepted" artworks will also lose their online gallery representation. If you are unsure if you can honour a commitment to exhibit, do not submit. If artists have an interested client and they direct sales through the Federation prior to the exhibition start date, (by emailing [sales@artists.ca](mailto:sales@artists.ca)) they will still be able to exhibit the work as "sold" for the duration of the exhibition.

### **HOW TO ENTER:**

**This call is open to Active, AFCA and SFCA Federation members in good standing. Submissions are accepted online at [www.artists.ca](http://www.artists.ca)**

**Submit as early as possible to allow time for troubleshooting. If you require assistance, contact the Gallery Manager at [gallerymanager@artists.ca](mailto:gallerymanager@artists.ca) no less than 3 days prior to the deadline. Artists submitting at the last minute may not receive the assistance they need.**

**ENTRY FEES:** are non-refundable and accepted in Canadian dollars only at \$20.00 for your submission and first submitted artwork. Further submissions are

\$20 per artwork. Artists can submit up to ten (10) artworks for consideration. If successful at jury, a minimum of one artwork per artist will be exhibited.

**CONDITIONS:** Submission of entry to this exhibition automatically constitutes the entrant's acceptance of the guidelines and rules outlined in this booklet. Due to the volume of entries, the FCA and their jurors do not provide individual feedback on submissions. The juror's decision is final, submission to this exhibition declares your acceptance of their decision.

## EXHIBITION SCHEDULE

February 2, 2024	Submissions Open
May 12, 2024	Deadline for Submissions
May 24, 2024	Applicants informed of their result by this date at the latest. Contact the FCA if you do not receive notice by this date. The artist is responsible for contacting the office if they do not receive notice
June 1, 2024	First official day of exhibition at <a href="http://federatingallery.com">federatingallery.com</a> and awards announcement. Award winners will be contacted by email
June 21, 2024	Last Day of exhibition

## SUBMIT NEXT:

# ON THE EDGE (OTE) 2024

**Submission Deadline: May 30, 2024**

In-Gallery and Online, Juried Exhibition

**Exhibition: July 29 - August 18, 2024**

International Open Call for Artists

**Best Sculpture in Exhibition:**

**\$1,000 OPUS Gift Card**

3 x Honourable Mention Awards in Title

**Qualifying for Signature Status**

**Submit at [artists.ca](http://artists.ca)**

