

2025 AIRE (Annual International Representational Exhibition)

3D INTAKE

Submission Deadline: February 15, 2025

In- Gallery and Online, Juried Exhibition

Exhibition Dates: March 25 - April 13, 2025

Open to 2D and sculpture submissions in all FCA-permitted media.

First Place for 2D: \$2000 Second Place: \$1000

Third Place: \$500 3 x Honourable Mentions

First Place for Sculpture: \$500

Second Place, Third Place and

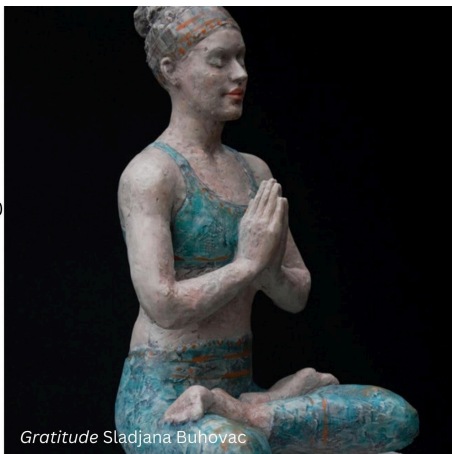
3 x Honourable Mentions Award in Title

Open to ALL Artists Internationally

Qualifying Call for Elected Member Status

Submit at artists.ca

Opening Reception: March 28, 2025



Gratitude Sladjana Buhovac

ABOUT THE EXHIBITION

The Annual International Representational Exhibition is a worldwide competition of excellence of artwork in the representational and semi-representational style.

AWARDS

Best Sculpture: \$500 CA

Second Place, Third Place and 3 x Honourable Mentions - Awards in Title.

GUIDELINES SPECIFIC TO THIS EXHIBITION

FORMAT: This is an in-gallery exhibition *with* online representation. Submitting artists, if accepted at jury, will be required to deliver their sculpture to the gallery in Vancouver, BC, Canada for feature. Artists cannot opt to display online only.

PERMISSIBLE SCULPTING MEDIA: stone, metal, glass, clay, wood, or ceramic.

EXCLUDED MEDIA: ivory, plaster, wax, reusable modeling compound, found objects, electronics, holography and other projected media, and fragile modeling media such as paper-mâché and salt dough.

Artwork must be “one-of-a-kind”, meaning that the production techniques expose each work to the possibility of uniqueness and where the reproduction series is limited to less than 200. All artworks must be finished to an archival standard and last up to a hundred years without a controlled display environment.

GENERAL PRESENTATION: All submissions must be able to be displayed by gallery staff without additional or special consideration. If an artist is successful at jury and delivers a piece that contravenes the Federation’s presentation requirements, the piece will be removed from the exhibition and returned to the artist at their expense, without refund. Works that arrive in disrepair will be fixed where possible, at the expense of the artist, or removed from the exhibition.

For display, the Federation has a limited supply of carpeted plinths and standing furniture for sculpture display. If accepted for exhibition, artists are welcome to supply their own display stands if they’d like.

SIZE: Fragile and sharp sculptures are not permitted. Sculptures may not exceed 40" tall x 24" wide. For heavy sculpture, sculptors must be prepared to install artwork themselves at a time and date of the Gallery Manager's choosing. While sculptors can advise where their pieces are displayed, ultimately the Fine Art Consultant will decide where sculptures are positioned. Sculptures cannot be so large they block wheelchair access around our gallery. Sculptures cannot demand special consideration like access to power or specialized lighting.

SUBJECT MATTER: Open to all subject matter

STYLE: Artworks must be in the representational or semi representational style

GENERAL FCA SUBMISSION GUIDELINES

COPYRIGHT AND STANDARDS: While using photographs as reference for your artwork is a long-held accepted practice, using stock imagery or photographs taken by professional photographers other than the submitting artist are not permissible in our organization, even with permission or paid licensing. Artists submitting to Federation Gallery must sign a contract that declares their artwork is not a copy, derivative or based on the work of others or in any way an infringement of copyright. The FCA will reject submitted artwork that appears to be in violation of copyright law. The FCA reserves the right to refuse entries that are not accurately represented by the digital photograph submitted for jury. Artists may not enter a piece that was the result of a workshop or class. Only work that is new to the Federation Gallery on Granville Island may be submitted. Work that has shown in a Federation Chapter exhibition may be submitted, as long as it did not receive a prize award at that Chapter exhibition.

DELIVERY: This is a submission for an in-gallery exhibition. If accepted, artists are required to deliver to the gallery in Vancouver, BC, Canada.

Costs of shipping artworks to and from the gallery, including customs, import fees or additional postage are the responsibility of the artist. If accepted at jury, artwork will be returned at the artists' expense OR the artist can provide a return prepaid waybill in their delivery shipment. Please direct questions regarding shipping to the Gallery Associate via shipping@artists.ca

INSURANCE: The FCA does not provide insurance for artwork. Artists are responsible for arranging their own insurance during transit and exhibition.

JURY: Entries will be reviewed by a panel of three jurors. Check the submission page for juror names. Images will be reviewed independently online by each juror. All artists will receive emailed notifications of their results. Artists may not send artworks that have not been juried and may not send artworks unless they receive an acceptance email. Artists attempting to contact jurors directly in relation to their submission will be removed from the exhibition. Your submitted pieces will receive one of the following jury results:

Accepted –artwork has been chosen for exhibition online and in gallery
Recognized – artwork has scored highly enough for exhibition but we're out of space! Recognized artwork displays online-only at federationsgallery.com
Declined - artwork was not chosen for exhibition this time

PRICING: All artwork must be available for sale. Artists cannot change submitted prices **at any time**. The minimum price for artworks is \$200. While there is no maximum price, if the artist cannot provide evidence of a recent sale in that price range, artworks with artificially inflated prices will be removed.

SALES: Artwork is under contract with the Federation effective from the date notification emails are sent. Do not submit an artwork if you intend to sell it outside of the exhibition. If artists have an interested client and they direct sales through the Federation prior to the exhibition start date, the artwork can still exhibit in the exhibition as “sold” for the duration of the exhibition and artists can retain their associated Elected Member Status point. If a sale is made artists will be informed by phone or email. If you have not heard from our sales team by the end of the exhibition, your artwork is unsold and will need collecting. By submitting artwork to this call, artists agree to allow the Federation to negotiate a sale on their behalf including up to 10% off of the artist’s submitted sale price. Following a sale, payment to artists will be made by cheque within 30 days. **COMMISSION RATE: FCA Members: 65% to artist, 35% to Federation NON-MEMBERS: 50% to artist, 50% to Federation**

SUBMITTING INFORMATION: Sculptors are given 3 image upload slots per sculpture in the submission system. This means you are expected to upload three photographs of 3 different views per sculpture (front/back/side are recommended). Submitted images that are blurry, poorly cropped, display a distracting background, were made in error, under the incorrect intake, exceed the size restrictions, or are the wrong orientation will be declined without refund. The description of your piece should be one-two sentences long, aiming to enhance a viewer’s interest in the artwork and encourage sales. This description will be printed on your in-gallery label. Please proofread and spell check it. Artists cannot change details on their submission after the deadline for entries has passed. Attempts to change submitted information after the deadline, or when the artist delivers will not be honored.

REMOVAL FROM EXHIBITION: The Federation reserves the right to remove artwork from any exhibition at any time. If an artist withdraws or sells an “Accepted” or “Recognized” artwork after receiving their notification email, for any reason, the artist is subject to a \$100 removal fee. Artists will not be able to participate in future Federation exhibitions until this fee is paid. Artists removing “Accepted” or “Recognized” artworks will also lose any associated Elected Member Status points and their online gallery representation. If you are unsure if you can honour a commitment to exhibit, do not submit.

HOW TO ENTER: This call is open to all artists worldwide. Submissions are accepted online at www.artists.ca Submit as early as possible to allow time for troubleshooting. If you require assistance, contact the Gallery Manager at gallerymanager@artists.ca no less than 3 days prior to the deadline. Artists submitting at the last minute may not receive the assistance they need.

ENTRY FEES: are non-refundable and accepted in Canadian dollars only: **FCA MEMBERS:** \$30 for your submission and first submitted artwork. Further submissions are \$25 per artwork. **NON-MEMBERS:** \$35 for your submission and first submitted artwork. Further submissions are \$30 per artwork. Artists can

submit up to five (5) artworks for consideration. If successful at jury, a minimum of one (1) artwork per artist will be exhibited.

CONDITIONS: Submission of entry to this exhibition automatically constitutes the entrant's acceptance of the guidelines and rules outlined in this booklet. Due to the volume of entries, the FCA and their jurors do not provide individual feedback on submissions. The juror's decision is final, submission to this exhibition declares your acceptance of their decision.

EXHIBITION SCHEDULE

November 19, 2024	Submissions Open
February 15, 2025	Deadline for Submissions
February 28, 2025	Applicants informed of their result by this date at the latest. Contact the FCA if you do not receive notice by this date. The artist is responsible for contacting the office if they do not receive notice.

March 7 - 22, 2025

Delivery Window

Artwork must be delivered before 5 PM on the final day of the delivery window. Early arrivals will be returned to the artist or charged a \$20 storage fee per piece, per week. Artworks can be hand delivered, couriered or sent in the mail. Deliver successful works to the following address, **with your name written on the box:**

**Attn: (Name of Exhibition)
Federation of Canadian Artists,
1241 Cartwright Street, Vancouver,
British Columbia, V6H 4B7, CANADA**

***Failure to deliver Artwork during the Delivery Window will result in the Federation charging late delivery fee at \$50.**

March 25, 2025	First official day of exhibition 10 AM– 5 PM, and awards announcement. Award winners will be contacted by email.
April 13, 2025	10 AM – 3 PM Last day of exhibition. No artwork will be picked-up by artists today.
April 18, 2025	Artists can collect artworks in person from the gallery as of today. Artists are responsible for collecting their artwork within two weeks of this date. Failure to do so will result in the Federation claiming storage fees at \$20 per piece, per week or disposing of artwork. Federation activities will be suspended until fees are paid.

May 5, 2025

Delivered and couriered artworks will be shipped out of the gallery by this date at the latest.