

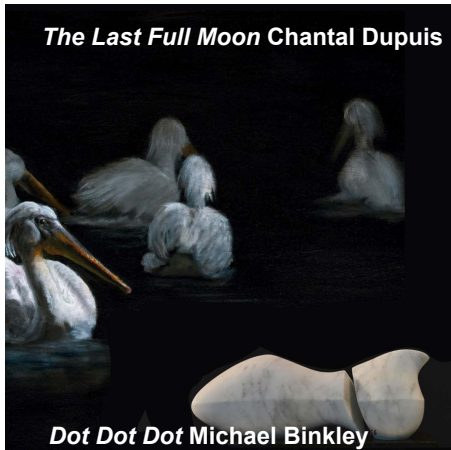


FEDERATION  
*of* CANADIAN  
ARTISTS

FEDERATION OF CANADIAN ARTISTS

## 2025 EXHIBITION SUBMISSION CALENDAR

SUBMIT ONLINE AT **ARTISTS.CA**



### **2025 Exhibiting Member Exhibition**

**Submission Deadline: November 30, 2024**

**Exhibition Dates: January 7 - 26, 2025**

**Qualifying Call for Elected Member Status**

**Painting & Sculpture Intakes**

**Open to Exhibiting Members of the FCA only**

It's a Federation tradition to open the year with a showcase from our Exhibiting members. Open to 2D and sculpture submissions in all FCA-permitted media. \$100 CA First Place Prize in 2D and \$100 CA Best Sculpture Prize.



### **2025 Animal**

**Submission Deadline: December 15, 2024**

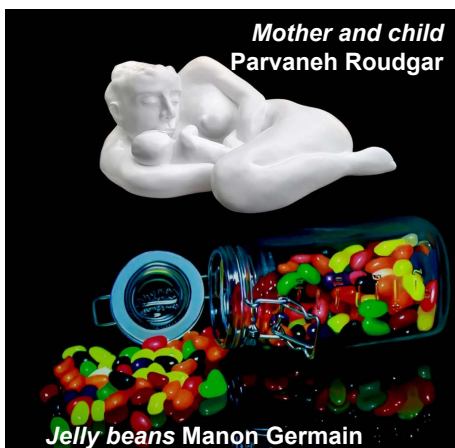
**Exhibition Dates: January 28 - February 9, 2025**

**Qualifying Call for Elected Member Status**

**Painting Intakes**

**Open to Exhibiting, AFCA & SFCA Members**

Open to all artworks with animal subject matter. Artists must use their own source material and reference photography. Subjects could be domestic, wild or rural animals. \$100 CA First Place Prize.



### **2025 Artists' Choice Online**

**Submission Deadline: January 12, 2025**

**Exhibition Dates: February 1 - 28, 2025 (Online-Only)**

**Non-Qualifying Call for Elected Member Status**

**Painting & Sculpture Intakes**

**Open to ALL Artists Internationally**

This exhibition is all about artists submitting their choice of subjects in their favourite media and styles. All artists juried in successfully, feature in the online gallery for the month of February. Awards prize totaling \$700 CA.



*Canyon Slopes - Fountain no.2*  
Jan Poynter, AFCA

## **2025 Scenes from Canada**

**Submission Deadline: January 15, 2025**

**Exhibition Dates: February 11 - March 2, 2025**

**Qualifying Call for Elected Member Status**

**Painting Intakes**

**Open to Exhibiting, AFCA & SFCA Members**

This exhibition is a visual celebration of the wondrous scenery of Canada. The definition of "Scenes" for the purpose of this exhibition extends beyond landscapes, to scenes from our daily lives and our cities. \$100 CA First Place Prize.



*Season of  
Mellow Fruitfulness*  
Caren Heine

## **2025 Bloom**

**Submission Deadline: January 30, 2025**

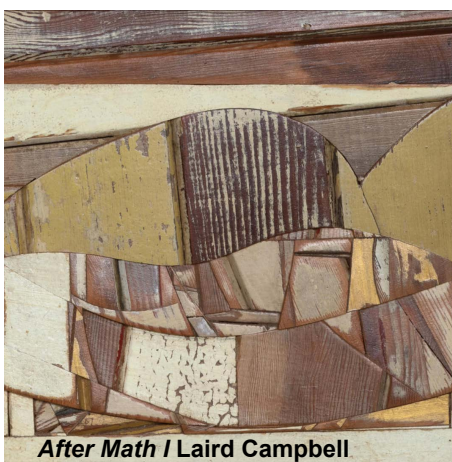
**Exhibition Dates: March 4 - 23, 2025**

**Qualifying Call for Elected Member Status**

**Painting Intakes**

**Open to Exhibiting, AFCA & SFCA Members**

"Bloom" marks the coming of spring to the Federation Gallery on Granville Island! Artists are encouraged to submit their most captivating artworks of plants and blooms in the break of spring season. \$100 CA First Place Prize.



*After Math* / Laird Campbell

## **2025 Material Matters**

**Submission Deadline: February 20, 2025**

**Exhibition Dates: March 15 - May 1, 2025**

**Off-site Exhibition at Timms Walkway Gallery**

**Non-Qualifying Call for Elected Member Status**

**Painting Intakes**

**Open to Exhibiting, AFCA & SFCA Members**

"Material Matters" highlights the role of materials and techniques in the creative process by showcasing artworks that experiment with medium, textures, and processes to convey meaning and evoke emotion.



*Gratitude* Sladjana Buhovac

*Transcendence* Enrique Bravo

## **2025 AIRE**

**Submission Deadline: February 15, 2025**

**Exhibition Dates: March 25 - April 13, 2025**

**Qualifying Call for Elected Member Status**

**Painting & Sculpture Intakes**

**Open to ALL Artists Internationally**

The Annual International Representational Exhibition is a worldwide competition of excellence of artwork in the representational and semi-representational styles that is open to all artists. This call is open to 2D and Sculpture. Awards prize totaling \$4,000 CA.





## **2025 Online Federation Showcase**

**Submission Deadline: March 12, 2025**

**Exhibition Dates: April 1 - 30, 2025 (Online-Only)**

**Non-Qualifying Call for Elected Member Status  
Painting Intakes**

**Open to Exhibiting, AFCA & SFCA Members**

This exhibition is an online-only visual showcase for all members of the FCA. This exhibition is open to all styles & subjects, with no limit on size. Artists are encouraged to submit their latest and greatest pieces to be showcased for the entire month of April. Awards prize totaling \$600 CA.



## **2025 Works on Paper**

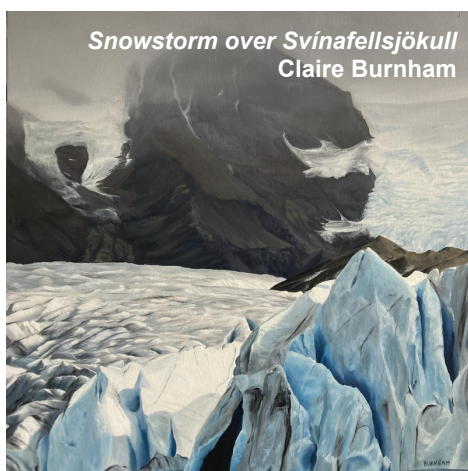
**Submission Deadline: March 15, 2025**

**Exhibition Dates: April 29 - May 11, 2025**

**Qualifying Call for Elected Member Status  
Painting Intakes**

**Open to ALL Artists Internationally**

As technology develops and artists are becoming more cognizant of the environmental impacts of artistic practice, this call is your challenge to work with all types of papers. \$100 CA First Place Prize.



## **2025 Landscapes**

**Submission Deadline: March 30, 2025**

**Exhibition Dates: May 12 - June 1, 2025**

**Qualifying Call for Elected Member Status  
Painting Intakes**

**Open to Active, AFCA & SFCA Members**

This is our most popular call for entry. Open to all landscapes, seascapes and city scenes. Submitted artworks can be of any landscape in the world. \$100 CA First Place Prize.



## **2025 Vancouver Salon**

**Submission Deadline: April 15, 2025**

**Exhibition Dates: June 2- 22, 2025**

**Qualifying Call for Elected Member Status  
Painting Intakes**

**Open to Exhibiting, AFCA & SFCA Members**

Paying homage to the European style art salons of the 1800's, this exhibition features over a hundred pieces, installed in our gallery floor to ceiling, as they did in the (in)famous art salons. \$100 CA First Place Prize.



## **2025 On the Edge Exhibition (OTE)**

**Submission Deadline: April 30, 2025**

**Exhibition Dates: June 23 - July 13, 2025**

**Qualifying Call for Elected Member Status**

**Painting & Sculpture Intakes**

**Open to ALL Artists Internationally**

"On the Edge" is the Federation's annual challenge for artists (both painting & sculpture) to test their limits and push their creative boundaries. Award prizes furnished by OPUS Art Supplies, totaling \$5,000 CA value in Gift Cards.



## **2025 Calendar Competition**

**Submission Deadline: May 12, 2025**

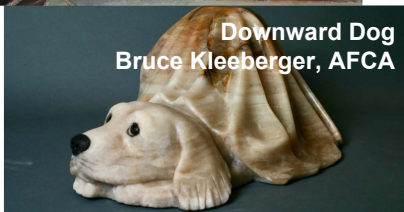
**Exhibition Dates: June 1 - 30, 2025 (Online-Only)**

**Non-Qualifying Call for Elected Member Status**

**Painting & Sculpture Intakes**

**Open to Exhibiting, AFCA & SFCA Members**

Submit your artwork for consideration in the official, annual FCA Art calendar. The top 14 artists receive a calendar feature and all artists juried in successfully, feature in the online gallery for the month of June. Oversize, Available, Not for Sale and Sold Artworks are all permitted! Awards prize totaling \$700 CA.



## **2025 Water**

**Submission Deadline: May 15, 2025**

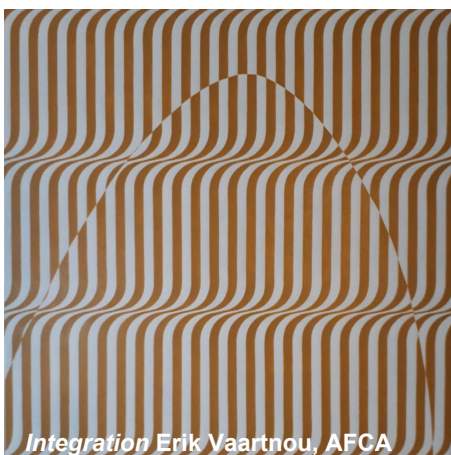
**Exhibition Dates: July 14 - 27, 2025**

**Qualifying Call for Elected Member Status**

**Painting Intakes**

**Open to Exhibiting, AFCA & SFCA Members**

This exhibition is open to all artworks in 2D FCA permissible media that have the focal subject of water. Make water the star and submit your piece! \$100 CA First Place Prize.



## **2025 Medals**

**Submission Deadline: May 30, 2025**

**Exhibition Dates: July 28 - August 17, 2025**

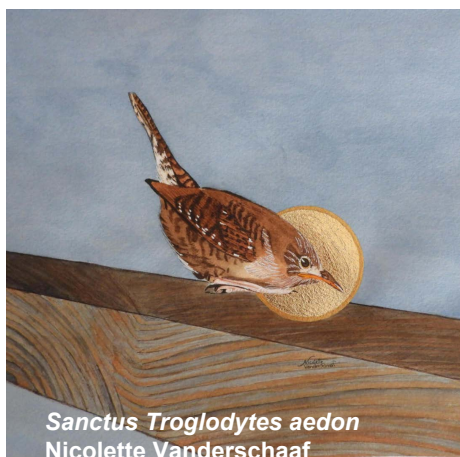
**Non-Qualifying Call for Elected Member Status**

**Painting Intakes**

**Open to AFCA & SFCA Members**

Formerly Signature Exhibition, this annual showcase of our AFCA and SFCA Member Artists sets the bar for Federation standards. Open to all styles and subjects, artists are encouraged to submit their very best artwork for the chance to take home medals!





## **2025 AIMAE**

**Submission Deadline: June 15, 2025**

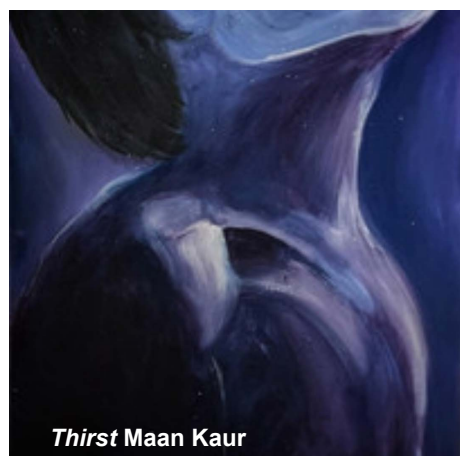
**Exhibition Dates: August 18 - September 7, 2025**

**Qualifying Call for Elected Member Status**

**Painting Intakes**

**Open to ALL Artists Internationally**

This is an opportunity for artists from all over the world to exhibit for minimal cost and a chance to win prizes. Submissions must be no bigger than 8 by 10 inches and unframed. This year's theme: Your Aesthetics. Awards prize totaling \$2,100 CA.



## **2025 Emerge Surge**

**Submission Deadline: June 30, 2025**

**Exhibition Dates: September 9 - 21, 2025**

**Non-Qualifying Call for Elected Member Status**

**Painting & Sculpture Intakes**

**Open to ALL EMERGING Artists Internationally**

This is a pilot exhibition to support emerging artists internationally. All self-identified emerging artists are encouraged to submit to be featured in Federation Gallery. Are you under 25? Inquire about free FCA membership as well!



## **2025 Chapter Challenge**

**Submission Deadline: July 12, 2025**

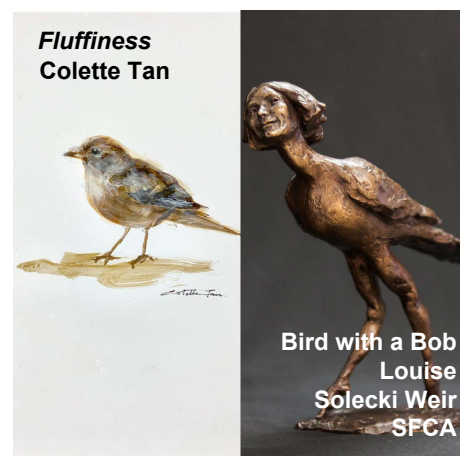
**Exhibition Dates: August 1 - 31, 2025 (Online-Only)**

**Non-Qualifying Call for Elected Member Status**

**Painting Intakes**

**Open to Exhibiting, AFCA & SFCA Members with Chapter Affiliation(s)**

The Federation Chapters that span entire Canada. This exhibition celebrates all our 14 Chapters. Awards prize totaling \$1,200 CA.



## **2025 Small**

**Submission Deadline: July 30, 2025**

**Exhibition Dates: September 23 - October 5, 2025**

**Qualifying Call for Elected Member Status**

**Painting & Sculpture Intakes**

**Open to Exhibiting, AFCA & SFCA Members**

Hundreds of small artworks make up an annual favourite at the Federation Gallery. Artworks are no bigger than 165 square inches in size, exclusive of the frame, (if framed). This call is also accepting small sculptures. \$100 CA First Place Prize in 2D and \$100 CA Best Sculpture Prize.



## **2025 Beautiful BC Artists Spotlight** **Presented by the Nature Trust of BC**

**Submission Deadline: August 15, 2025**

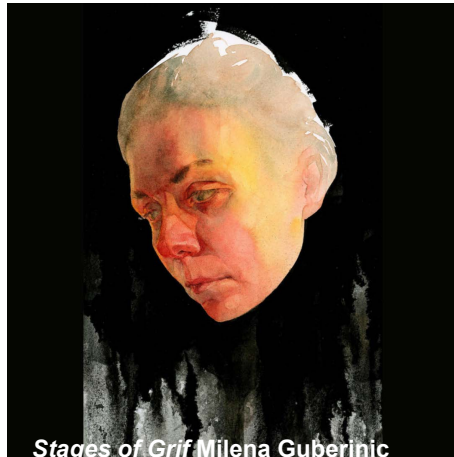
**Exhibition Dates: October 7 - 23, 2025**

**Qualifying Call for Elected Member Status**

**Painting Intakes**

**Open to ALL Artists Internationally**

This Exhibition is in collaboration with the Nature Trust of British Columbia. Artists should submit their most breath-taking BC scenery, landscapes and creatures. \$500 First Place Prize.



## **2025 LIMITLESS**

**Submission Deadline: September 12, 2025**

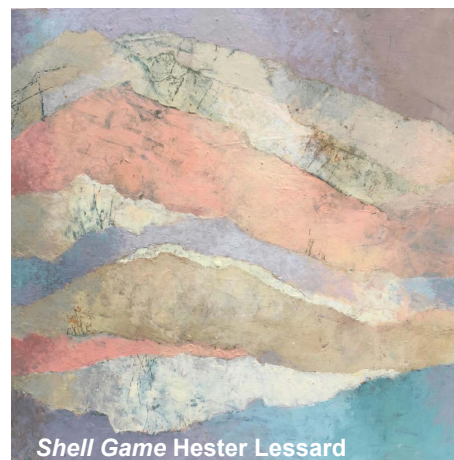
**Exhibition Dates: October 1 - 31, 2025 (Online-Only)**

**Non-Qualifying Call for Elected Member Status**

**Painting Intakes**

**Open to ALL Artists Internationally**

LIMITLESS celebrates boundless creativity where artists transcend conventional norms through diverse mediums and subject matter. This exhibition invites exploration into infinite possibilities. Awards prize totaling \$600 CA.



## **2025 Abstracted**

**Submission Deadline: September 30, 2025**

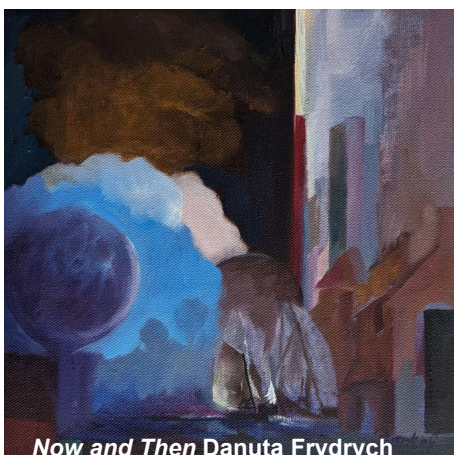
**Exhibition Dates: November 18 - 30, 2025**

**Qualifying Call for Elected Member Status**

**Painting Intakes**

**Open to Exhibiting, AFCA & SFCA Members**

\$1,000 Ann Zielinski Award of Abstract Excellence. This is the fourth year the Federation is able to issue a \$1,000 First Place Prize, generously donated by SFCA artist member, Ann Zielinsk in support of artists working in the abstract and semi-abstract style.



## **2025 Ten Squared**

**Submission Deadline: October 15, 2025**

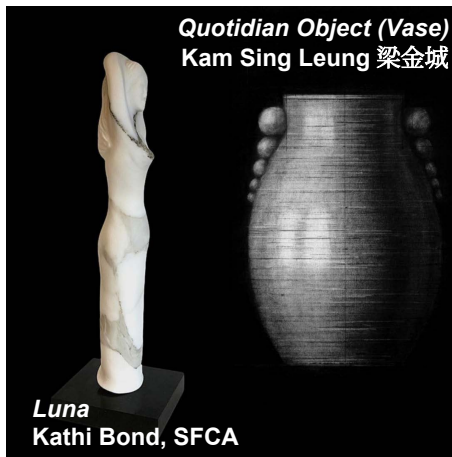
**Exhibition Dates: December 2 - 21, 2025**

**Non-Qualifying Call for Elected Member Status**

**Painting Intakes**

**Open to ALL Artists Internationally**

This annual fundraising exhibition calls for artworks in any style and of any subject, sized exactly 10" x 10". Substrates must be 1 1/2 inches deep and only unframed pieces are permitted for this call. Open to all styles and subjects.



## **2025 Shape & Form**

**Submission Deadline: November 12, 2025**

**Exhibition Dates: December 1 - 31, 2025 (Online-Only)**

**Non-Qualifying Call for Elected Member Status**

**Painting & Sculpture Intakes**

**Open to ALL Artists Internationally**

Shape & Form is the Federation's annual exhibition of artworks that explore the visual language of shapes and forms. This exhibition loans itself beautifully to sculpture and has no limit on artwork size, depth or weight. \$100 CA for First Place in 2D and \$100 CA for Best Sculpture.

### **HOW TO USE THIS CALENDAR**

Use this calendar to plan your entries and to navigate your way to earning Elected Member Status points. This Calendar is in order of submission deadline date, not in order of exhibition dates. We issue a separate calendar for visitors to exhibitions. Details on submissions are subject to change. The most up to date information will be on the submission page at [artists.ca](http://artists.ca), so check back there often!