

2026 Artists' Choice- Online Exhibition

2D Intake

Submission Deadline: January 12, 2025

Online, Juried Exhibition

Exhibition Dates: February 1-28, 2026

Open to 2D and Sculpture submissions in all FCA-permitted media.

First Place for 2D: \$300, Second Place for 2D: \$200, Third Place for

2D: \$100, and 3 x Honourable Mentions Award in Title

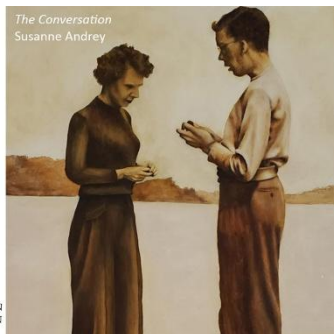
First Place for Sculpture: \$100

Second Place, Third Place and 3 x Honourable Mentions Award in Title

Open to ALL Artists Internationally

Non-Qualifying Call for Elected Member Status

Submit today artists.ca



ABOUT THE EXHIBITION

This exhibition is all about artists submitting their choice of subjects in their favourite media and styles. All artists juried in successfully, feature in the online gallery for the month of February. Awards prize totaling \$700 CA.

AWARDS

First Place \$300, Second Place \$200 Third Place \$100 and 3 x Honourable Mention Awards in Title.

GUIDELINES SPECIFIC TO THIS EXHIBITION

PERMISSIBLE 2D MEDIA: oil, acrylic, water media, pastel, encaustic, pen and ink, pencil, graphite, and hand-pulled prints in print-runs of less than 200. Artists practicing in mixed media, you are required to list all media used, inclusive of mediums and gels.

EXCLUDED 2D MEDIA: digital art, photography, giclee (whether hand modified or not), pyrography, and any work that relies heavily on mechanical reproduction.

Submitted artworks must demonstrate concept, manipulation of materials, and evidence of the aesthetic judgment of the creator. Artwork must be “one-of-a-kind”, meaning that the production techniques expose each work to the possibility of uniqueness and where the reproduction series is limited to less than 200. All artworks must be finished to an archival standard and last up to a hundred years without a controlled display environment. **Note:** For mixed media pieces, artists must list out the media they’ve used in the submission.

2D PRESENTATION: Framed and unframed artwork is permitted to this call. All submissions must be able to be installed by a potential client without additional or special consideration. Federation clients are familiar with a certain standard of presentation.

Your online submitted artworks must meet the following presentation requirements, even with online-only exhibitions: Edges of artwork on cradled wood panel must be completely void of paint or completely covered in a

complimentary colour or continuation of the artwork. Edges of work on gallery wrapped canvas can either be a continuation of the artwork or painted in a complimentary colour. No taped edging is permitted. All substrates must be wired a third of the way down from the top with d-rings and plastic coated picture hanging wire, regardless of size, even for online-only calls for entry. Only submit pieces that are client-ready. This means completely dry and varnished or finished to an archival standard. If the work is on paper, this means framed and ready for a client to put on their wall.

2D SIZE: Open to Artworks of any size and depth.

SUBJECT MATTER: All subjects permitted **STYLE:** All styles permitted

GENERAL FCA SUBMISSION GUIDELINES

COPYRIGHT AND STANDARDS: While using photographs as reference for your artwork is a long-held accepted practice, using stock imagery or photographs taken by professional photographers other than the submitting artist are not permissible in our organization, even with permission or paid licensing. Artists submitting to Federation Gallery must sign a contract that declares their artwork is not a copy, derivative or based on the work of others or in any way an infringement of copyright. The FCA will reject submitted artwork that appears to be in violation of copyright law. The FCA reserves the right to refuse entries that are not accurately represented by the digital photograph submitted for jury. Artists may not enter a piece that was the result of a workshop or class. **Important note:** Only work that has not been accepted previously into another Federation online-only exhibition may be submitted.

DELIVERY: Costs of shipping artworks to the gallery, including customs, import fees or additional postage are the responsibility of the artist. If sold through the Federation Gallery, the artist will either drop off the artwork in-person or arrange shipping at the artist's expense.

FCA Members Save on Shipping with Freightcom

Freightcom is offering FCA members up to **75% off** on shipments – to sign up for free, check out our [Member benefits!](#)

INSURANCE: The FCA does not provide insurance for artwork. Artists are responsible for arranging their own insurance during transit.

JURY: Entries will be reviewed by a panel of three jurors. Please check the submission page for juror names. Images will be reviewed independently online by each juror. All artists will receive emailed notifications of their results. Artists may not send artworks that have not been juried and may not send artworks unless they receive an acceptance email. Artists attempting to contact jurors directly in relation to their submission will be removed from the exhibition. Your submitted pieces will receive one of the following jury results:

Accepted –artwork has been chosen for the exhibition

Declined - artwork was not chosen for exhibition this time

PRICING: This call for entry is open to **available, sold and not for sale artwork**. On the submission page you will be prompted to enter a price, regardless of the sales status of the piece. Artists cannot change submitted prices or availability (for sale to not for sale etc.) at any time. The minimum price for artworks is \$200. While there is no maximum price, if the artist cannot provide evidence of a recent sale in that price range, artworks with artificially inflated prices will be removed

SALES: Artwork is under contract with the Federation effective from the date notification emails are sent. Do not submit an artwork if you intend to sell it outside of the exhibition. If artists have an interested client and they direct sales through the Federation prior to the exhibition start date, the artwork can still exhibit in the exhibition as “sold” for the duration of the exhibition. If a sale is made artists will be informed by phone or email.

By submitting artwork to this call, artists agree to allow the Federation to negotiate a sale on their behalf including up to 10% off of the artist’s submitted sale price. Following a sale, payment to artists will be made by cheque within 30 days. **COMMISSION RATE: FCA Members: 65% to artist, 35% to Federation, NON-MEMBERS: 50% to artist, 50% to Federation**

SUBMITTING INFORMATION: Submitted images that are blurry, poorly cropped, display a background/frame, were made in error, or are the wrong orientation will be declined without refund. When submitting online, crop your image to exclude visible edges of substrate. All submissions must include both the media AND substrate the work is on i.e. canvas, paper, board and panel.

The description of your piece should be one-two sentences long, aiming to encourage sales. This description will be printed on your in-gallery label. Please proofread and spell check it. Artists cannot change details on their submission after the deadline for entries has passed. Attempts to change submitted information after the deadline, or when the artist delivers will not be honored.

REMOVAL FROM EXHIBITION: The Federation reserves the right to remove artwork from any exhibition at any time. If an artist withdraws or sells an “Accepted” artwork after receiving their notification email, for any reason, the artist is subject to a \$100 removal fee. Artists will not be able to participate in future Federation exhibitions until this fee is paid. If you are unsure if you can honour a commitment to exhibit, do not submit.

HOW TO ENTER: This call is open to **ALL Artists Internationally**. Submissions are accepted online at www.artists.ca Submit as early as possible to allow time for troubleshooting. If you require assistance, contact

the Gallery Coordinator at fcagallery@artists.ca no less than 3 days prior to the deadline. Artists submitting at the last minute may not receive the assistance they need.

ENTRY FEES: are non-refundable and accepted in Canadian dollars only. **FCA MEMBERS:** \$25.00 for your submission and first submitted artwork. Further submissions are \$20.00 per artwork. **NON-MEMBERS:** \$30.00 for your submission and first submitted artwork. Further submissions are \$25.00 per artwork. Artists can submit up to five (5) artworks for consideration. If successful at jury, a minimum of one (1) artwork per artist will be exhibited.

CONDITIONS: Submission of entry to this exhibition automatically constitutes the entrant's acceptance of the guidelines and rules outlined in this booklet. Due to the volume of entries, the FCA and their jurors do not provide individual feedback on submissions. The juror's decision is final, submission to this exhibition declares your acceptance of their decision.

EXHIBITION SCHEDULE

October 1, 2025	Submissions Open
January 12, 2026	Deadline for Submissions
January 23, 2026	Applicants informed of their result by this date at the latest. Contact the FCA if you do not receive notice by this date. The artist is responsible for contacting the office if they do not receive notice
February 1, 2026	First official day of exhibition at federationgallery.com .
February 28, 2026	Last day of exhibition