

2026 Bloom

Submission Deadline: January 30, 2026

In- Gallery and Online, Juried Exhibition

Exhibition Dates: March 3 - March 15, 2026

Opening Reception on March 6, 3pm - 5pm

Open to 2D submissions

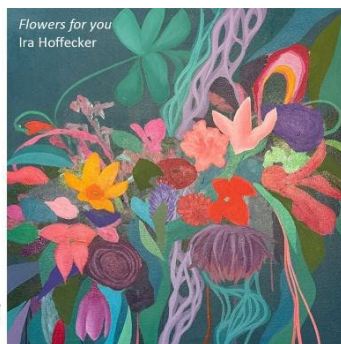
First Place: \$100

Second Place, Third Place and 3 x Honourable Mentions Award in Title

Open to Exhibiting, AFCA and SFCA Members

Qualifying Call for Elected Member Status

Submit today artists.ca



ABOUT THE EXHIBITION

"Bloom" marks the arrival of spring to the Federation Gallery on Granville Island!

Artists are encouraged to submit their most enchanting works with blooms, plants and floral subject matter.

AWARDS

First Place \$100 CA, Second Place, Third Place and 3 x Honourable Mentions - Awards in Title.

GUIDELINES SPECIFIC TO THIS EXHIBITION

FORMAT: This is an in-gallery exhibition with online representation. Submitting artists, if accepted at jury, will be required to deliver their artwork to the gallery in Vancouver, BC, Canada for feature. Artists cannot opt to display online only.

PERMISSIBLE 2D MEDIA: oil, acrylic, water media, pastel, encaustic, pen and ink, pencil, graphite, and hand-pulled prints in print-runs of less than 200. Artists practicing in mixed media, you are required to list all media used, inclusive of mediums and gels.

EXCLUDED 2D MEDIA: digital art, photography, giclee (whether hand modified or not), pyrography, and any work that relies heavily on mechanical reproduction.

Submitted artworks must demonstrate concept, manipulation of materials, and evidence of the aesthetic judgment of the creator. Artwork must be "one-of-a-kind", meaning that the production techniques expose each work to the possibility of uniqueness and where the reproduction series is limited to less than 200. All artworks must be finished to an archival standard and last up to a hundred years without a controlled display environment. **Note:** For mixed media pieces, artists must list out the media they've used in the submission.

PRESENTATION: Framed and unframed artwork is permitted to this call so long as the unframed artworks meet the minimum depth requirement (see size). Edges of artwork on cradled wood panels must be completely void of paint or completely covered in a complimentary colour or continuation of the artwork.

Edges of work on gallery wrapped canvas can either be a continuation of the artwork or painted in a complimentary colour. All substrates must be wired a third of the way down from the top with d-rings and plastic coated picture hanging wire, regardless of size. Improperly wired works will incur a \$20 wiring fee.

GENERAL PRESENTATION: All submissions must be able to be displayed by gallery staff without additional or special consideration. If an artist is successful at jury and delivers a piece that contravenes the Federation's presentation requirements, the piece will be removed from the exhibition and returned to the artist at their expense, without refund. Works that arrive in disrepair will be fixed where possible, at the expense of the artist, or removed from the exhibition.

SIZE: Artworks may not be larger than 84" tall or 48" wide **inclusive of the framed dimensions, if framed.** Works on a cradled wood panel or canvas must be at least 1 ½ inches deep. Thinner substrates are eligible if framed. If your artwork is intended to display framed, you must provide accurate pricing and framed dimensions at the time of submission – they cannot be added later.

SUBJECT MATTER: Flowers, petals, buds, blooming shrubs

STYLE: All styles permitted

GENERAL FCA SUBMISSION GUIDELINES

COPYRIGHT AND STANDARDS: While using photographs as reference for your artwork is a long-held accepted practice, using stock imagery or photographs taken by professional photographers other than the submitting artist are not permissible in our organization, even with permission or paid licensing. Artists submitting to Federation Gallery must sign a contract that declares their artwork is not a copy, derivative or based on the work of others or in any way an infringement of copyright. The FCA will reject submitted artwork that appears to be in violation of copyright law. The FCA reserves the right to refuse entries that are not accurately represented by the digital photograph submitted for jury. Artists may not enter a piece that was the result of a workshop or class. Only work that is new to the Federation Gallery on Granville Island may be submitted. Work that has shown in a Chapter exhibition may be submitted.

DELIVERY: Costs of shipping artworks to and from the gallery, including customs, import fees or additional postage are the responsibility of the artist. If accepted at jury, artwork will be returned at the artists' expense OR the artist can provide a return prepaid waybill in their delivery shipment. Please direct questions regarding shipping to the Gallery Associate via shipping@artists.ca

INSURANCE: The FCA does not provide insurance for artwork. Artists are responsible for arranging their own insurance during transit and exhibition.

JURY: Entries will be reviewed by a panel of three jurors. Please check the submission page for juror names. Images will be reviewed independently online by each juror. All artists will receive emailed notifications of their results.

Artists may not send artworks that have not been juried and may not send artworks unless they receive an acceptance email. Artists attempting to contact jurors directly in relation to their submission will be removed from the exhibition. Your submitted pieces will receive one of the following jury results:

Accepted –artwork has been chosen for exhibition online and in gallery

Recognized – artwork has scored highly enough for exhibition but we're out of space! Recognized artwork displays online-only at federationgallery.com

Declined - artwork was not chosen for exhibition this time

PRICING: All artwork must be available for sale. Artists cannot change submitted prices **at any time**. The minimum price for artworks is \$200. While there is no maximum price, if the artist cannot provide evidence of a recent sale in that price range, artworks with artificially inflated prices will be removed.

SALES: Artwork is under contract with the Federation effective from the date notification emails are sent. Do not submit an artwork if you intend to sell it outside of the exhibition. If artists have an interested client and they direct sales through the Federation prior to the exhibition start date, the artwork can still exhibit in the exhibition as “sold” for the duration of the exhibition and artists can retain their associated Elected Member Status point. If a sale is made artists will be informed by phone or email. If you have not heard from our sales team by the end of the exhibition, your artwork is unsold and will need collecting. By submitting artwork to this call, artists agree to allow the Federation to negotiate a sale on their behalf including up to 10% off of the artist's submitted sale price. Following a sale, payment to artists will be made by cheque within 30 days.

COMMISSION RATE: 65% to artist, 35% to Federation

SUBMITTING INFORMATION: Submitted images that are blurry, poorly cropped, display a background/frame, were made in error, or are the wrong orientation will be declined without refund. When submitting online, crop your image to exclude visible edges of substrate. All submissions must include both the media AND substrate the work is on i.e. canvas, paper, board and panel. The description of your piece should be one-two sentences long, aiming to encourage sales. This description will be printed on your in-gallery label. Please proofread and spell check it. Artists cannot change details on their submission after the deadline for entries has passed. Attempts to change submitted information after the deadline, or when the artist delivers will not be honoured.

REMOVAL FROM EXHIBITION: The Federation reserves the right to remove artwork from any exhibition at any time. If an artist withdraws or sells an “Accepted” or “Recognized” artwork after receiving their notification email, for any reason, the artist is subject to a \$100 removal fee. Artists will not be able to participate in future Federation exhibitions until this fee is paid. Artists removing “Accepted” or “Recognized” artworks will also lose any associated Elected Member Status points and their online gallery representation. If you are unsure if you can honour a commitment to exhibit, do not submit.

HOW TO ENTER: This call is open to Exhibiting, AFCA and SFCA Federation members in good standing. Submissions are accepted online at www.artists.ca. Submit as early as possible to allow time for troubleshooting. If you require assistance, contact the Gallery Coordinator at fcagallery@artists.ca no less than 3 days prior to the deadline. Artists submitting at the last minute may not receive the assistance they need.

ENTRY FEES: are non-refundable and accepted in Canadian dollars only at \$20.00 for your submission and first submitted artwork. Further submissions are \$20 per artwork. Artists can submit up to five (5) artworks for consideration. If successful at jury, a minimum of one (1) artwork per artist will be exhibited.

CONDITIONS: Submission of entry to this exhibition automatically constitutes the entrant's acceptance of the guidelines and rules outlined in this booklet. Due to the volume of entries, the FCA and their jurors do not provide individual feedback on submissions. The juror's decision is final, submission to this exhibition declares your acceptance of their decision.

EXHIBITION SCHEDULE

November 1, 2025 Submissions Open

January 30, 2026 **Deadline for Submissions**

February 10, 2026 Applicants informed of their result by this date at the latest. Contact the FCA if you do not receive notice by this date. The artist is responsible for contacting the office if they do not receive notice.

**February 13 –
28, 2026**

Delivery Window

Artwork must be delivered before 5 PM on the final day of the delivery window. Early arrivals will be returned to the artist or charged a \$20 storage fee per piece, per week. Artworks can be hand delivered, couriered or sent in the mail. Deliver successful works to the following address, **with your name written on the box:**

Attn: (Name of Exhibition) Federation of Canadian Artists, 1241 Cartwright Street, Vancouver, British Columbia, V6H 4B7, CANADA

***Failure to deliver Artwork during the Delivery Window will result in the Federation charging late delivery fee at \$50.**

FCA Members Save on Shipping with Freightcom

Freightcom is offering FCA members up to **75% off** on shipments – to sign up for free, check out our

[Member benefits!](#)

March 3, 2026	First official day of exhibition 10 AM – 5 PM, and awards announcement. Award winners will be contacted by email.
March 7, 2026	3 PM – 5 PM Opening Reception
March 15, 2026	10 AM – 3 PM Last day of exhibition. <u>No artwork will be picked-up by artists today</u>
Mar 18 – Apr 1, 2026	. Artists can collect artworks in person from the gallery as of today. Artists are responsible for collecting their artwork within two weeks. Failure to do so will result in the Federation disposing of artwork or charging storage fees at \$20 per piece, per week. Federation activities will be suspended until these fees are paid.
April 5, 2026	Delivered and couriered artworks will be shipped out of the gallery by this date at the latest.